

Angle Dependant Dip Coating Unit



HOLMARC OPTO-MECHATRONICS PVT. LTD

Model: HO-TH-ADDC1



Holmarc Angle Dependant Dip Coating unit enables nano layer coating of substrates by dipping them in beakers containing coating solution. The dipping angle can be varied from 0 to 45 degree depending on the requirement. There are 4 beaker holders provided for coating 4 different substrates. The dipping speed, dip duration, withdrawal speed and dry duration can be varied for each beaker independently.

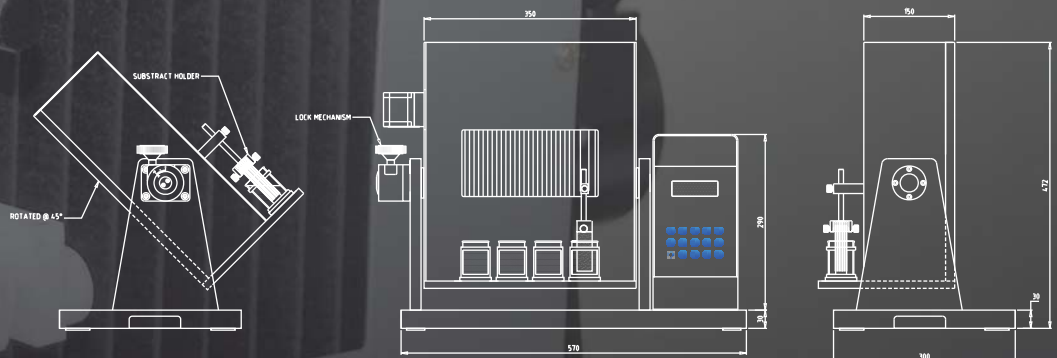
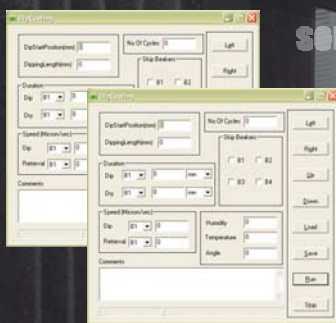
Basic principle of ADDC : The substrate is drawn out of the coating solution under a well defined angle of inclination. Both surfaces are coated simultaneously resulting in different film thickness on front and back side.

One of the advantage of ADDC is the reduced number of layers or coating steps to obtain the desired thin film properties.

Specifications

| | |
|------------------------|------------------------|
| Actuator | : Servo motor |
| Drive mechanism | : Lead screw |
| Speed control | : Available |
| Power input | : 230V, 50Hz |
| PC connectivity | : Serial port (RS 232) |
| Stroke length max. | : 75 mm |
| Drawing speed min. | : 2 micron/sec |
| Drawing speed max. | : 9000 micron/sec |
| Dimensions (appx.) | : 570 x 300 x 475 mm |
| Max. Power Consumption | : 800 watts |

- Our equipment can be customized to suit specific applications.
- Please discuss your application needs with us.



Ph: 91-484-2540075, 2557487
E-mail: mail@holmarc.com

www.holmarc.com

Contact Us

Plot No. B.7, H.M.T., Industrial Estate
H.M.T. P.O., Kalamassery, Kochi, Kerala