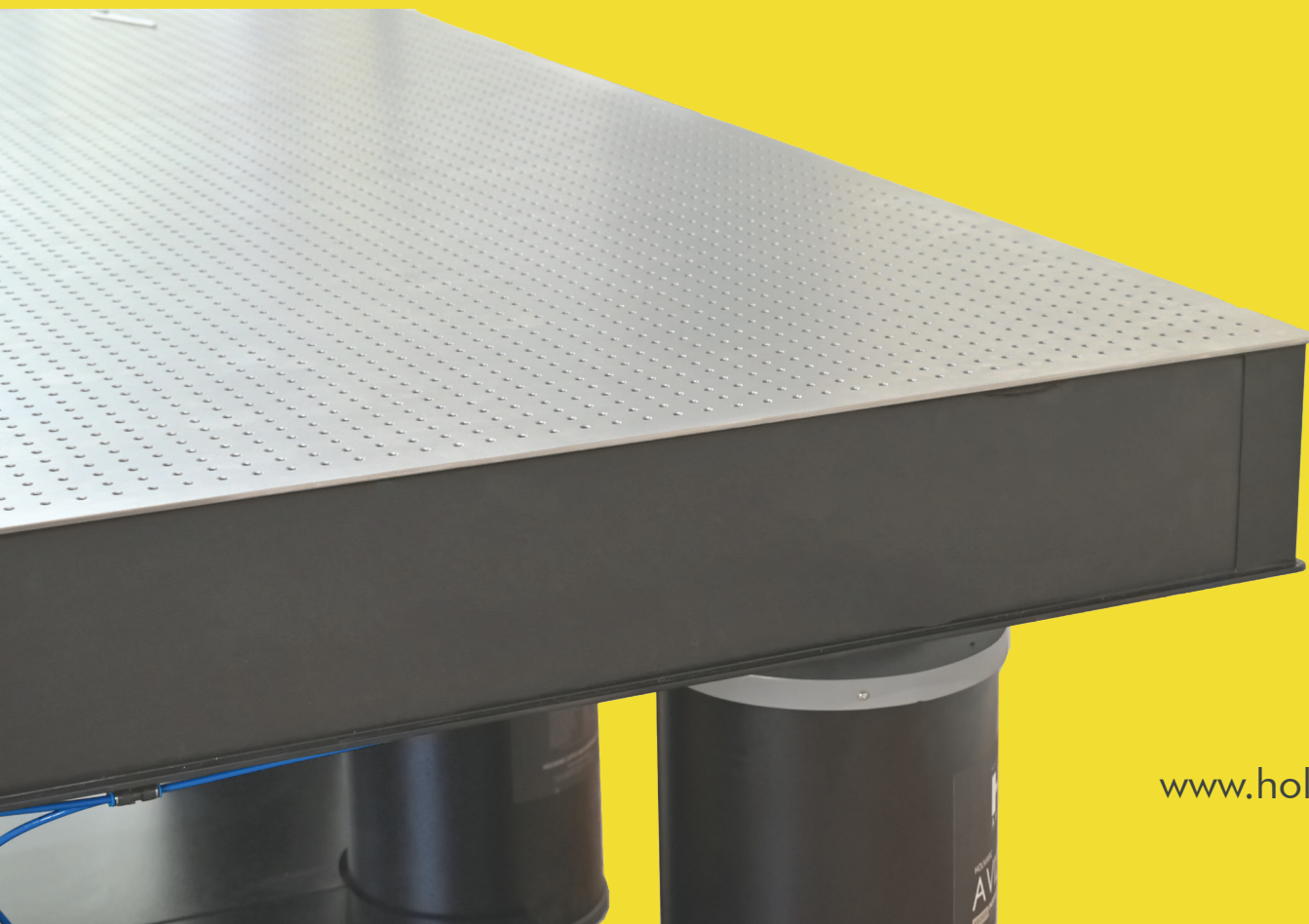


Breadboards Tabletops Rails and Carriages



Contact Information

Registered Office B.7., H.M.T. Industrial Estate
H.M.T. P.O, Kalamassery, Kochi
Kerala, India, Pin - 683 503

Corporate Office Door No. 37/386, Manath
Tower
Opp. Kalamassery Police
Station
Changampuzha Nagar P.O,
Kochi
Kerala, India, Pin - 682033

CIN U33125KL1993PLC006984
GST No 32AAACH9492C1ZQ
MSME UDYAM-KL-02-0043524

Business Hours Monday to Saturday 9:00am
5:00pm

E-mail Contacts sales@holmarc.com
Website www.holmarc.com

Sales Contacts:

Jim Jose Director - Sales & Marketing
Mob : +91 938-863-2098
Email : sales@holmarc.com

Engineer - Sales & Service +91 920-719-7771
+91 920-719-7772
+91 920-719-7776

Volume pricing / Analytical Instruments
OEM Solutions Spectroscopy
Microscopy
Lab Equipments
PHYSICS Lab Instruments
Specialty Products

Technical Support

Get in touch with our technical experts and discuss your application needs and unique requirements You can be sure that you will receive rapid response and service

International sales and Service

Worldwide Distributors

Online Informations

www.holmarc.com

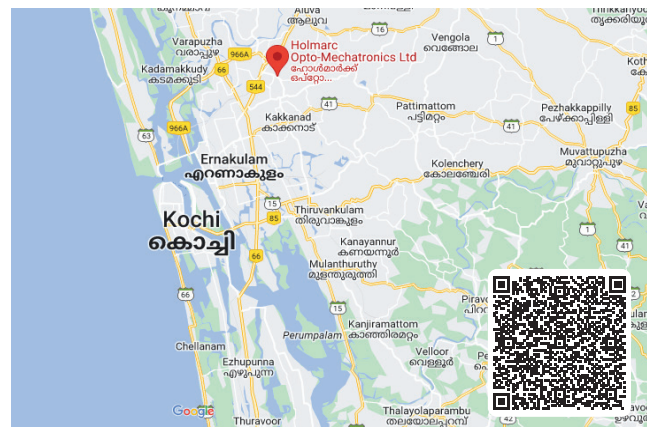
Easy to use search features
Browse through our website & discover more about range of products and services

New product updations
Available before catalogue, We introduce more than 100 new products every year. Check them out before they hit the catalogue

Video Resources
There's nothing better than seeing a product in action
Watch our product demo to learn more about the products
These video provides a high level overview of the main functionality of the products

Downloads
Documents, Software & Manuals can be download from
www.holmarc.com/downloads

Connect with us on

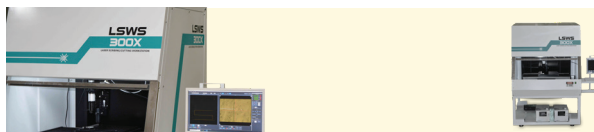


Breadboards & Tabletops

Holmarc, a leading manufacturer, offers a diverse range of solid breadboards, honeycomb breadboards, workstations, and optical tables¹. These precision-engineered components find applications in research, development, and testing environments. The breadboards come with options for rigid, passive, or active vibration damping, catering to specific needs. Holmarc's engineers can design customized solutions to suit various customer applications. The components are designed to work seamlessly together, allowing easy assembly and disassembly for versatility across different setups. Additionally, a wide selection of accessories and adapter components is available for further customization and replacement needs.

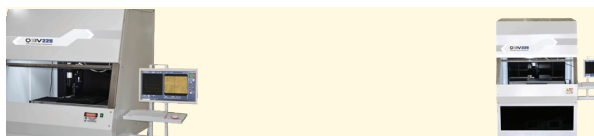
The solid breadboards from Holmarc are robust and reliable. They provide a stable platform for experiments, measurements, and optical setups. Whether you're working on laser systems, microscopy, or precision alignment, these breadboards offer excellent performance. Holmarc also manufactures honeycomb breadboards, which combine lightweight construction with high stiffness. These honeycomb structures effectively dampen vibrations, making them ideal for sensitive experiments and optical applications. Overall, Holmarc's breadboards and tabletops are essential tools for researchers and engineers seeking precision and stability in their work¹².

We Await For An Early Opportunity
To Work With You
To Meet Your Engineering Needs.



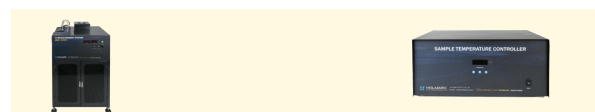
Automated Multi-wavelength Laser
Scribing/ablation/Cutting station
with Micro Inspection Camera

24



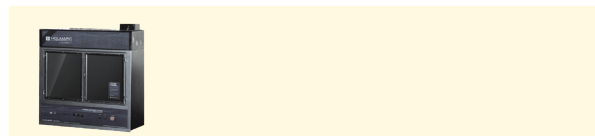
Spectral Quantum Efficiency
& IV Measurement Unit

28



Solar Simulator with IV Measurement
System

42



Solar Simulator & IV Measurement
System with Keithley SMU

44

Our Portfolio

Established in 1993 and located in Kochi, India, Holmarc Opto-Mechatronics Ltd manufactures variety of scientific and engineering instruments for research, industry and education. Our products in the fields of spectroscopy, microscopy holography and thin films reflect capabilities we have in multitudes of disciplines, be it optics, mechanics photonics, electronics or computer science.

Why Holmarc

ISO CERTIFIED COMPANY

ISO 9001:2015 Certified Company

To meet the challenges of global competition, we started an organized quality improvement program. We have successfully implemented a quality management system as per industry standard. The goal of the company is to design, manufacture and service quality products that consistently meet our customer's requirements and needs.

R&D DEPARTMENT

Our R&D department constantly interacts with leading research institutes in India for development and upgradation of our products.

GLORIOUS PAST AND COMMITTED SINCE 1993

Holmarc, from its very beginning in 1993 has maintained cordial and professional relationships with all major research institutes in India, be it Atomic Energy Institution, Space Research Center, DRDO, IIT's, IISc's, NIT's, DST institutes, CSIR Centers and University Centers.

HOLMARC IS UNIQUE IN ITS ABILITY TO DESIGN PROTOTYPE AND MANUFACTURE UNDER ONE ROOF



MULTI-DISCIPLINARY CAPABILITIES

Over the years, we have built expertise and capabilities in multitudes of engineering and scientific metrology disciplines right from conceptualization to manufacturing. Our capabilities range from mechanics, optics and embedded systems to thin film metrology, spectroscopy and microscopy both in design and manufacturing. For many of our products, in addition to design and development, we carry out manufacturing process development as well. When Holmarc products are ordered, our customers can be sure of receiving products with our combined experience and expertise.

COST EFFECTIVE SOLUTIONS

Though we strive to be the best in the world in the respective product domain, we maintain lean manufacturing operations to keep our costs minimum as possible. We make sure that our products are most cost effective compared to our competitors with comparable performance.

AFTER SALES SERVICE

We make sure that all our products are in working condition to the satisfaction of our customers throughout their life cycle irrespective of warranty period. It is our principle not to make any of our products obsolete as long as the customer would like to use.

PRODUCT CUSTOMIZATION

Leveraging our multi-disciplinary capabilities, we routinely customize our products for specific applications. Our engineers are more than willing to work with users throughout the product development and manufacturing process.

Our strength is 330 people as of March 2024 and is still growing. All our departments, be it optics design, optics manufacturing, mechanics design, electronics R&D or soft-ware development are all manned by experienced professionals in the respective disciplines. We have 35000 sq ft built up area for housing our manufacturing infrastructure in optics mechanics and electronics. With state of the art machines, equipments and instruments. Holmarc technicians and engineers bring out world class products, each distinct and best in its kind. Holmarc is unique in its approach to providing after sales service. We give maintenance and modification support for all our products as long as our customer needs it irrespective of warranty or year of purchase. We do not make any of our products obsolete rather encourage our users to modify and use as long as it is technically possible

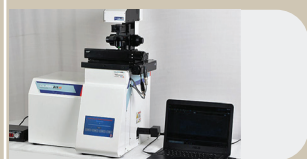


Optics

Optics Manufacturing and OEM Capability

HOLMARC offers custom and OEM ordering for optics and optical assemblies to bring a wide range of options and features to you. OEM orders are components or assemblies that will be used towards finished goods, manufacturing tools or pieces of testing equipment. For OEM enquires, please contact sales@holmarc.com or phone at 91 920-719-7771

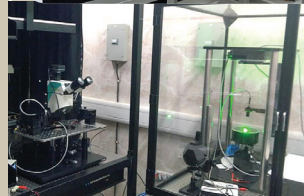
Our optics facilities are staffed by well-trained, experienced technicians and engineers. Together they, combine years of experience with advanced machinery and tightly tolerated metrology to transform raw materials into finished optics. Lens production processes incorporate manual, automated machines and skilled craftsmen, providing a standard optics and the flexibility to create specialized optics tailored to a customer's needs. We can create optics from Calcite N-BK7, Fused Silica F2, NSF1, Sf66 NSK-14 Sf11 at from Schott and Quartz crystal, H-K9L F4, H-ZF3 etc CDGM Other materials are available on request. Optics up to 360mm diameter or 360mm square can be created in a diverse range of shapes and sizes. Our experienced technicians are able to regularly achieve a wavefront error of less than $\lambda/10$ and surface roughness between 3 to 5A on all optical flats



Thin Film Coating Lab

The Thin Film Coating Lab at Holmarc uses Vacuum coating chambers, Thin film reflectometer, Spectroscopic ellipsometer and spectrophotometers that aid in the creation of thin film optical coatings. A team of experienced engineers and technicians design, deposit, and measure thin film coatings ranging from our standard anti-reflective coatings to metallic mirror coatings.

Deposition techniques include resistive heat evaporation, electron beam evaporation with ion-assisted deposition, and ion beam sputtering. After deposition, coated optics go through another round of hand inspections and samples are optically profiled with Holmarc theta two theta advanced spectrophotometers: Transmission and reflectance data can be captured between 200 nm to 2.5 μm . The measurements taken at this step is to ensure optical performance meets specifications.



Key Capabilities
 Skilled Technicians and Engineers
 Vacuum Chambers Employing Multiple
 Deposition Techniques
 Custom Built Chambers for Dedicated Use
 with Metals
 Individual Hand Inspection of Optics
 Optical Characterization by Spectropho-
 tometer

Prototyping
 Our design services cover all aspects
 of development optical, mechanical
 electronic and software for many
 industries including medical device,
 scientific, and industrial. we build
 complex instrumenta tion in very small
 form factors.

Design & Fabrication

Custom Engineering

Mechanical Design and Fabrication Workshop

This Division provides mechanical engineering support to all on-going project activities in terms of mechanical design, fabrication quality control, integration / assembly and installation of various electronic components/systems. The division has qualified and experienced manpower and a mix of conventional and CNC machines tools for mechanical fabrication and CAD facilities. The division also has chemical and electro plating facility

DESIGNING

Our product design team has extensive experience in the requirement planning process and we work closely with the customer to ensure we meet or exceed their targets and goals

Coordination is crucial to a successful product design and a smooth transition into production. With our dedicated team to define and execute a design and assembly plan, customers have come to think of us as an extension of their own engineering organizations

Our facility offers full product engineering, design, and manufacturing quick-turn capabilities, with specialized expertise in opto-mechanics and photonics systems Our staff of highly qualified engineers has countless years of experience with demanding commercial product delivery,

Custom Engineering design and manufacturing separates us from the competition. Bring us your most challenging requirements and let our engineers help to solve the issues that are impacting your performance. When your project requires products not available off the shelf, HOLMARC is your key to the perfectly developed solution. Many of the products that we offer today are designs that were developed to solve specific customer issues. We will customize our existing product to develop a modified standard or work with your team to develop a solution geared toward your specific needs. HOLMARC has an experienced engineering staff, with over 25 years of experience, and is dedicated to solve your problems, no matter the size or complexity



Key Capabilities

- ▶ Circuit Board Design, Manufacturing and Programing
- ▶ Data Acquisition and Control
- ▶ Electronic Test and Instrumentation
- ▶ Software Design and Engineering
- ▶ Graphic Display Programming and User Interface Design and Applications

CRITICAL ASSEMBLIES
PRECISION ASSEMBLY OF
PRODUCTS CONTAINING
OPTICS, MECHANICS
AND ELECTRONICS.
HOLMARC CAN SUPPLY
THE
COMPONENTS TO YOUR
SPECIFICATIONS

Electronics Design

Electronic Design and Software Services Motion Control Manufacturing

Many modern electromechanical systems require custom control, power and signal- conditioning electronics that cannot be purchased off-the-shelf Holmarc provides custom electronic design services. With a wide range of scientific and technical knowledge, we have experience working on a diverse range of projects including anything from small electronic control systems to large systems. We work with you to help you figure out what you need by helping you develop and refine your requirements, and helping you evaluate solution paths before starting on a prototype. We can manufacture your electronic or electromechanical products from start to finish, quickly and with total flexibility.

Our staff is ready to assist you in every step of the process From program management to quality manufacturing & testing Please let us know more about your specific needs for a custom control system and our engineers will be glad to help you reaching your goals. For more information about our services in electrical and mechanical assembly or to learn about our additional services in contract manufacturing, please send an RFI/RFQ today.

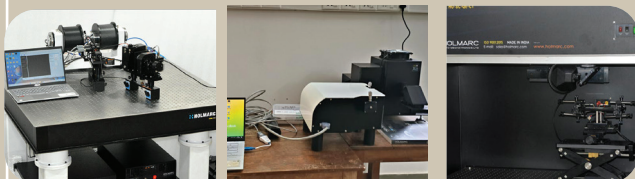
Customize Products

Modify the standard or request a part from scratch. Our design and manufacturing department will find the best solution for your applications

Product customization has been a core service of HOLMARC throughout our 31 years history Infrastructure and capabilities in mechanics and optics enable us to provide complete in-house services. We can modify a standard product or engineer a complete solution to meet any specific application requirements. HOLMARC has the unique capability to customize standard products for OEM and scientific applications. In addition to new product development, we actively pursue continuous improvement of our existing products.

Our experienced engineering, manufacturing and inspection teams are dedicated to produce quality components. We can assist in design and development of components as well as complete assemblies We are dedicated to meet our customer needs by leveraging our years of experience in optics, mechanics and control electronics.

HOLMARC IS THE IDEAL CANDIDATE FOR LOW TO MEDIUM VOLUME OPTICAL ELECTRO MECHANICAL MANUFACTURING




With growing demands for our products internationally, Holmarc is increasing its reach and availability across the globe every year! We promote our products internationally through our international partners and dealers Find the authorized dealer for Holmaro products from your region

ALGERIA

 Mr. OMAR KRACHNI
 NOVICONCEPT
 6, Rue Ouadah Abdelhamid
 Cite Ouled Brahem
 19000 SETIF Algeria
 Tel/Fax +213 36 52 35 91
 Mobile :- 213 560 099 0240
 Email: manager.noviconcept@gmail.com

ISRAEL

 Shai Borohovich, BSc
 Sales manager,
 Astech Optics,
 P.O.B.2184 Tel-Aviv
 61217, Israel
 Telefax: +972-3-9217070
 Email: sales@astechoptics.com
 Web: www.astechoptics.com

SINGAPORE

 Samuel Chew
 Acculex Solutions Pte Ltd.
 2,SKYTECH Building #05-02,
 Bukit Batok Street 24, Singapore 659480
 Tel: (65) 6253 3988
 Mobile: (65) 9189 3127
 Email: samuel.chew@acculex.net
 Web: www.acculex.net

BANGLADESH

 Milton Pande
 Paragon Techno Services Ltd.
 Rupayan Center (6th Floor)
 72, Mohakhall C/A Dhaka-1212
 Tel : 88-02-9854286
 Fax: 88-02-9885658
 Email: milton@paragonbd.com
 Web :www.paragonbd.com

JORDAN

 Ms. Bassma Taha
 Purchasing / Logistic Manager
 First Source Engineering
 273 Al Madina Monawawra
 St Al Andalus Complex
 Amman - Jordan
 Tel: 00962 6 567 2728
 Fax. 00962 6 567 2872:
 Email:amjad@firstsource-eng.com
 Email:bassma@firstsource-eng.net
 Web: www.firstsource-eng.com

SYRIA


 Fadi Khalil
 International Technical Support Center PO
 Box 22430 Bab Touma
 Damascus Syria
 Tel: 00963 11 44691166
 Fax. 00963-11 44691167
 Mobile : 00963 933 656026
 E-mail : education@itecs.bz

IRAN

 Iman Masoumi
 Tosé eh Fanavan Lidoma Teyf Co Ltd
 Unit 2, No 18. Mohagheh St
 Shahid Beheshti Ave, Karaj,
 Alborz-Iran
 Tel-0098(0)26 322 33 222
 0098(0)26 322 56 940
 E-mail: royanco.ltd@gmail.com

NEPAL

 DV Enterprises
 (Deals in Scientific Equipment)
 Beside Xavier International School
 Kalopul Rudramati marga-5
 Kathmandu, Nepal
 Mobile 00977-9852031180
 Email:dvscientific.nepal@gmail.com

TURKEY

 Global Analytical
 Laboratory Equipments Ltd
 Umit Mahallesi 2547
 Sokak No :18 06810
 Umitkoy, Ankara, Turkiye
 E-mail aksahin@globalanalitik.com.tr
 Web www.globalanalitik.com.tr

IRAQ

 Dr Alaa H. Ali
 Anwar Al-Raazi Co. Ltd.
 Iraq - Baghdad
 Umal Street Q-518 Ztuq-6 H-13,
 14 Tamoez post office mailbox: 18066
 Tel: +964 (07801874981, 07706256615,
 07506647897)
 Email: alaa@alraazi-scientific.com
 Web: www.alraazi-scientific.com

ROMANIA

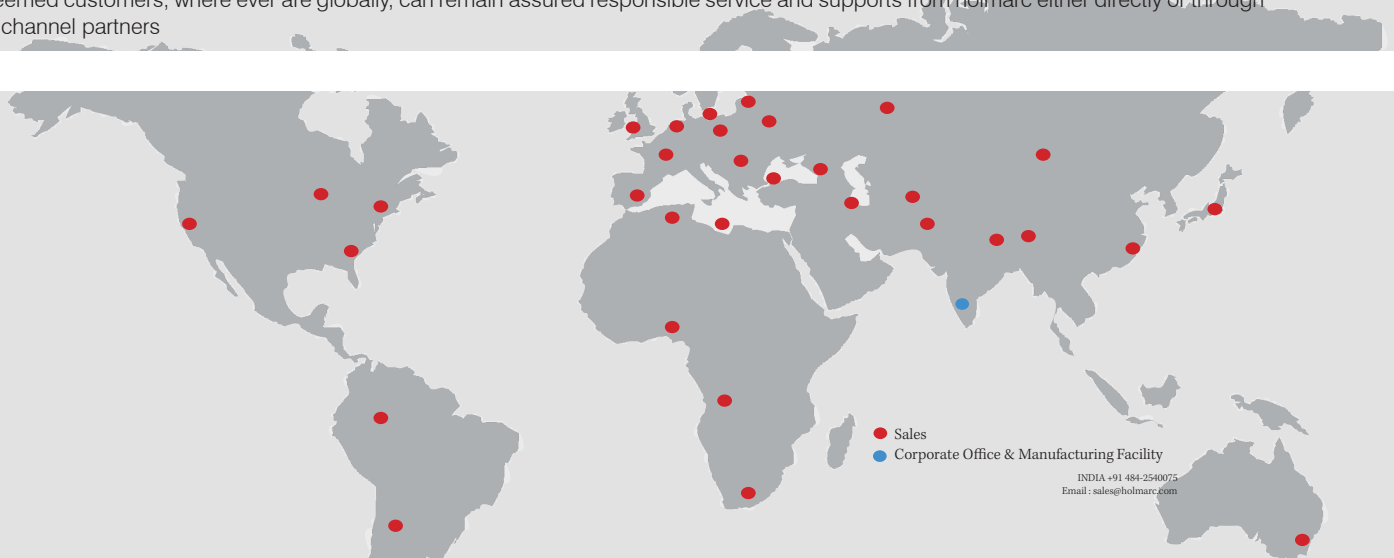
 Radu istrate
 Andreescu Labor & Soft SRL
 Str Maica Domnului 14 BI TS2
 Bucuresti, Sector 2
 Cod Postal 023724
 E-mail: andreesculabor-soft.ro
 Web: www.labor-soft.ro

UNITED KINGDOM

 CN Technical Services Limited
 +44 (0)1354 669899
 +44 (0)7860 232092
 Web
www.cntech.co.uk
www.afmparts.com

World Wide Distributer

Holmarc has presence throughout the world for all our product verticals, We ship directly to our customers where our exclusive distributors are not present. Where ever commercially viable, our engineers visit customer site for installation and training, When personal visits by our engineers are not economically suggestive, we encourage video conference for technical discussions as well as for training and service. There are routine training sessions conducted regularly for personals from our global distributors at our factory on all our products esteemed customers, where ever are globally, can remain assured responsible service and supports from holmarc either directly or through our channel partners



Volume pricing and OEM Solutions

For over 30 years, Homarc has been associating and building partnerships with original equipment manufacturers from diverse industrial disciplines with benefits to all parties involved

Significant portion of Holmarc's business comes from OEM customers in bio-medical diagnostics, analytical and pharmaceutical industries. Our vast experience in optics, mechanics and instrumentation electronics helps us to come out with the right custom product in the most cost effective manner for OEM applications.

We are proud to have enough staff strength and in house infrastructure to meet demanding delivery schedules from our OEM customers We associate with OEMs by providing parts/components sub-assemblies or fully assembled products as per custom design by utilizing our production facilities, know how and experience in diverse engineering and scientific disciplines

Apart from standard products described in this brochure, holmarc manufactures custom products/parts/modules

www.holmarc.com
contact us at

Email: sales@holmarc.com
Ph:+91 920-719-7771 +91 920-719-7772

B.7., HMT INDUSTRIAL ESTATE
KALAMASSERY
KOCHI- 683503, INDIA
CIN : U33125KL1993PLC006984
GST No: 32AAACH9492C1ZQ
MSME : UDYAM-KL-02-0043524

CUSTOMIZE ANY PRODUCT

for OEMs. We are happy to acknowledge that a significant portion of our business is from our OEM clients. We offer our standard products as well to OEMs with / without custom modifications either for integrating with their final products or shipping it as it is. We welcome associations from OEMs around the world

Our quality assurance personals understand the importance of maintaining predictable functionality in all the products that we ship and havoc any deviations in product specifications can make in the assembly lines of our OEM customers Our QA department is fully equipped with experienced staff and state of the art instrumentation for assuring quality standards in all shipments we make

At Holmarc, vw are happy to pass the cost benefits of volume manufacturing to our esteemed customers, OEM as well as end users Special prices are available for any of our standard products with order quantity above 10 units All are welcome to discuss the details with our sales team

WE HAVE WELL-DEVELOPED OP-
TIC AND MECHANICAL
FABRICATION FACILITIES AND
THIN FILM COATING UNIT
CONTACT US FOR ASSISTANCE
WITH YOUR MANUFACTURING
NEEDS.

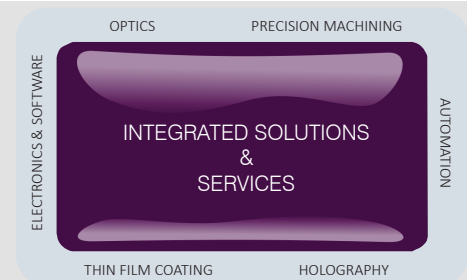
International Sales & Services

All of Holmarc's products described in this brochure are designed and manufactured for world market with state of the art design and contemporary features Though products are specified in metric units, we manufacture in British units as well. Similarly, our devices which require external power are manufactured for 220VAC and 110 VAC



Just one more easy way to pay!

If our capabilities are of interest then please tell us more about your required specifications and application process. You can contact us via phone, email or make plans to visit us



Service and Support



We have full fledged service department for ensuring prompt and timely service for all our products. As a policy, we make sure that all service queries and requests are answered within 48 hours or within 2 working day. Whether the product is standard or custom, whether it is in warranty or out of warranty, holmarc customers can remain assured of service at any point of time.

Our service team can be directly contacted at service@holmarc.com

WE ARE ALWAYS READY TO HELP YOU



Warranty and Terms

Every Holmarc Instruments and its accessories are warranted by HOLMARC OPTO-MECHATRONICS LTD for a period of ONE YEAR from the date of original purchase Holmarc will repair or replace a product, or part thereof, found by Holmarc to be defective, provided the defective part is returned to Holmarc, with proof of purchase This warranty applies to the original purchaser and our distributors and is non-transferable. Each returned part or product must include a written statement detailing the nature of the claimed defect, as well as the end user's name, address, and phone number

This warranty is not valid in cases where the product has been abused or mishandled, where unauthorized repairs have been attempted or performed, or where depreciation of the product is due to normal wear-and-tear

Holmarc specifically disclaims special, indirect, or consequential damages or lost profit which may result from a breach of this warranty. Any implied which cannot be disclaimed are hereby limited to a term of one year from the date of original retail purchase. Holmarc reserves the right to change product specifications or to discontinue products without notice. Please refer our commercial invoice for warranty claim

FEEDBACK



We appreciate your feedback If you have any comments regarding our products, please let us know. HOLMARC appreciates any customer feedback Your inputs will help us evaluate and improve our product

OUR NEW WEBSITE IS NOW
LIVE
www.e-holmarc.com

Search Products
Shipping
Payment

Do shop Online for stock products with great discounts and offers
Breadboards & Tabletops | Rails & Carriers | Optomechanics | Labjacks | Linear Translation Stage
| Rotation Stages Motorized Stages | Optics | Spectrometer | Microscopes | Analytical Instruments
Lab Equipments | Physics Instruments | Linear Slides (Bearings) | Sources & Power supply |
Detectors & Cameras | Optical Fibers & Accessories

Delivery and Shipping Policy

All purchases made from India is free deliverable to the location address entered by the user via Courier agencies like DHL, Bluedart or FedEx. If the destination address is unreachable to Courier, we will send the package via India Speed Post. Any Customs Duty, entry taxes or such will have to be paid by the Customer. We strive to ship the packages within one day from the date of purchase. Certain components can only be shipped by wooden packing. In that case, there will be a delay for fumigation and other paper works. However, dispatch is guaranteed within one week. Exworks-Kochi : Apply coupon 'Exworks-Kochi' in the 'Checkout page' or in the 'Cart page' in case you want to use your carrier for shipping and delivery.

Refund & Cancellation

All the items once ordered and shipped cannot be cancelled. All Holmarc items purchased through our e-holmarc website are eligible for a full refund within 30 days of purchase if the item is returned unopened and in original packaging. If you receive items that have been damaged during shipment, or find that your shipment is incomplete, please call us within 10 days for an immediate replacement or repair. After 10 days, an additional handling fee may be imposed. Shipping and handling charges will not be refunded. Refunds are issued by check for pre-paid merchandise. Credit order refunds are issued to the credit card or seller's open account to which the product was charged.

PRODUCT DESIGNING
TO DEVELOP AND MANUFACTURE SCIENTIFIC
CONCEPT WHICH MEET YOUR REQUIREMENTS

PROTOTYPE
EQUIPPED WITH PRECISION MACHINERY AND STAFFED
WITH HIGHLY EXPERIENCED TECHNICIANS

INDUSTRIAL/LAB AUTOMATION
VARIETY OF LINEAR AND ROTARY MOTION PRODUCTS

BIO-LABS
WE PROVIDES PRODUCTS AND SERVICES FOR LIFE
SCIENCE RESEARCH MARKET IN THE ACADEMIC AND
BIOTECH VENUES

ANALYTICAL INSTRUMENTS
HOLMARC CONTINUOUSLY DEVELOPING &
MANUFACTURING LABORATORY & INDUSTRIAL
ANALYTICAL INSTRUMENTS

MEASURING EQUIPMENTS
HOLMARC MANUFACTURES A WIDE RANGE OF
PRECISION MEASURING INSTRUMENTS

ELECTRONICS AND SOFTWARE
SPECIALIZE IN THE DEVELOPMENT OF CONTROL
ELECTRONICS/ INSTRUMENTATION

MICROSCOPY
HOLMARC DESIGN AND MANUFACTURE ADVANCED
MICROSCOPY SOLUTIONS FOR RESEARCH & INDUSTRY

SPECTROSCOPY
HOLMARC DEVELOP AND MANUFACTURE SPECTROM-
ETERS, LIGHT SOURCES, SOFTWARE, FIBER OPTIC
CABLES, AND ACCESSORIES

SOLAR CELL INSTRUMENTS
INSTRUMENTS FOR CHARACTERIZATION OF
THIN FILMS, SOLAR CELLS, PHOTO-CONDUCTIVE
MATERIALS & OTHER OPTO ELECTRONIC DEVICES

OPTICS
FACILITIES FOR MANUFACTURING PRECISION
OPTICAL COMPONENTS AND ASSEMBLY

THIN FILM COATING
OUR THIN FILM COATING LAB IS CAPABLE OF
PRECISION OPTICAL COATINGS

HOLOGRAPHY
HOLOGRAPHIC LAB
FOR PRODUCTION OF GRATINGS

CHEMISTRY LAB INSTRUMENTS
DESIGNED FOR EXPERIMENTS IN ANALYTICAL
CHEMISTRY

PHYSICS LAB PRODUCTS
COVERING ALMOST ALL LAB EXPERIMENTS FOR
GENERAL & ENGINEERING PHYSICS

Product Profile



**4000+ Products for
scientific research**

Holmarc manufactures wide variety of products for industry, research and education integrating diverse engineering disciplines such as optics, mechanics, electronics and software

With multi-disciplinary capabilities both in people and infrastructure, holmarc manufactures diverse range of products from simple optics and opto-mechanics to sophisticated spectroscopic and imaging systems. Our customer groups are diverse as well. We have products for factory automation, precision measurements, laboratory analysis, physics education, basic and applied research, etc.

For educational applications, we manufacture an array of optics based teaching instruments. There are variety of equipments to teach diffraction interferometry, spectroscopy, polarization, holography, fiber optics, etc. for graduate and post graduate level courses, student research and projects. These products are used for industry training as well.

For research, we have a vast line of products virtually for all scientific disciplines. Our optics and opto-mechanics find wide applications in photonics related scientific research. We have introduced instruments like microscopes, spectrosopes, spectrophotometers, etc which find applications in every research labs. As you will find out from this brochure, we have products for holography and thin films as well. Our mission in the market is to provide quality reliable products by expanding our capabilities and product offerings. We have continued to expand our product line of spectroscopy and microscopy including optical characterization and measurement equipments. Our product range is rapidly expanding and we have many items available that are not shown in this catalogue.

To learn more visit www.holmarc.com. Holmarc can be found on Facebook at www.facebook.com/Holmarc, on twitter. com/Holmarc_Kochi or view the Holmarc YouTube channel at www.youtube.com/user/holmarcproducts

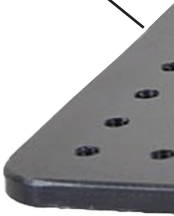


Solid Breadboards

CONTENTS

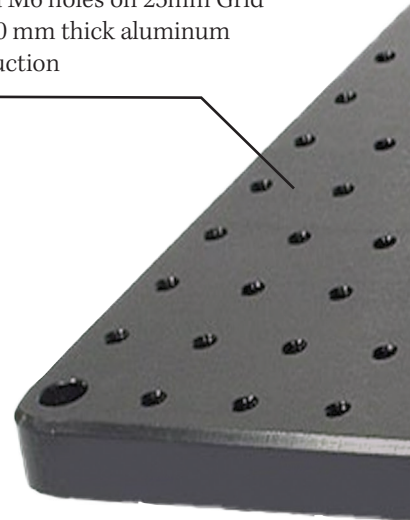
Mini Breadboards MBB Series

Tapped M4 holes on 12.5mm Grid
Solid 5 mm thick aluminum
or SS construction



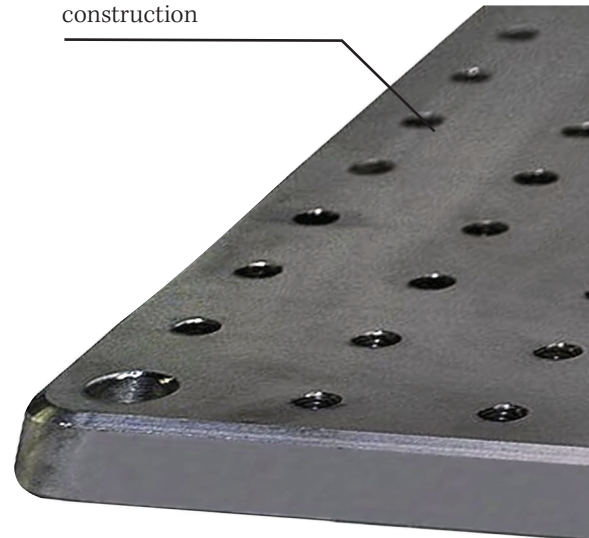
Standard Solid Breadboards BB Series

Tapped M6 holes on 25mm Grid
Solid 10 mm thick aluminum
construction



Heavy Duty Breadboards HBB Series

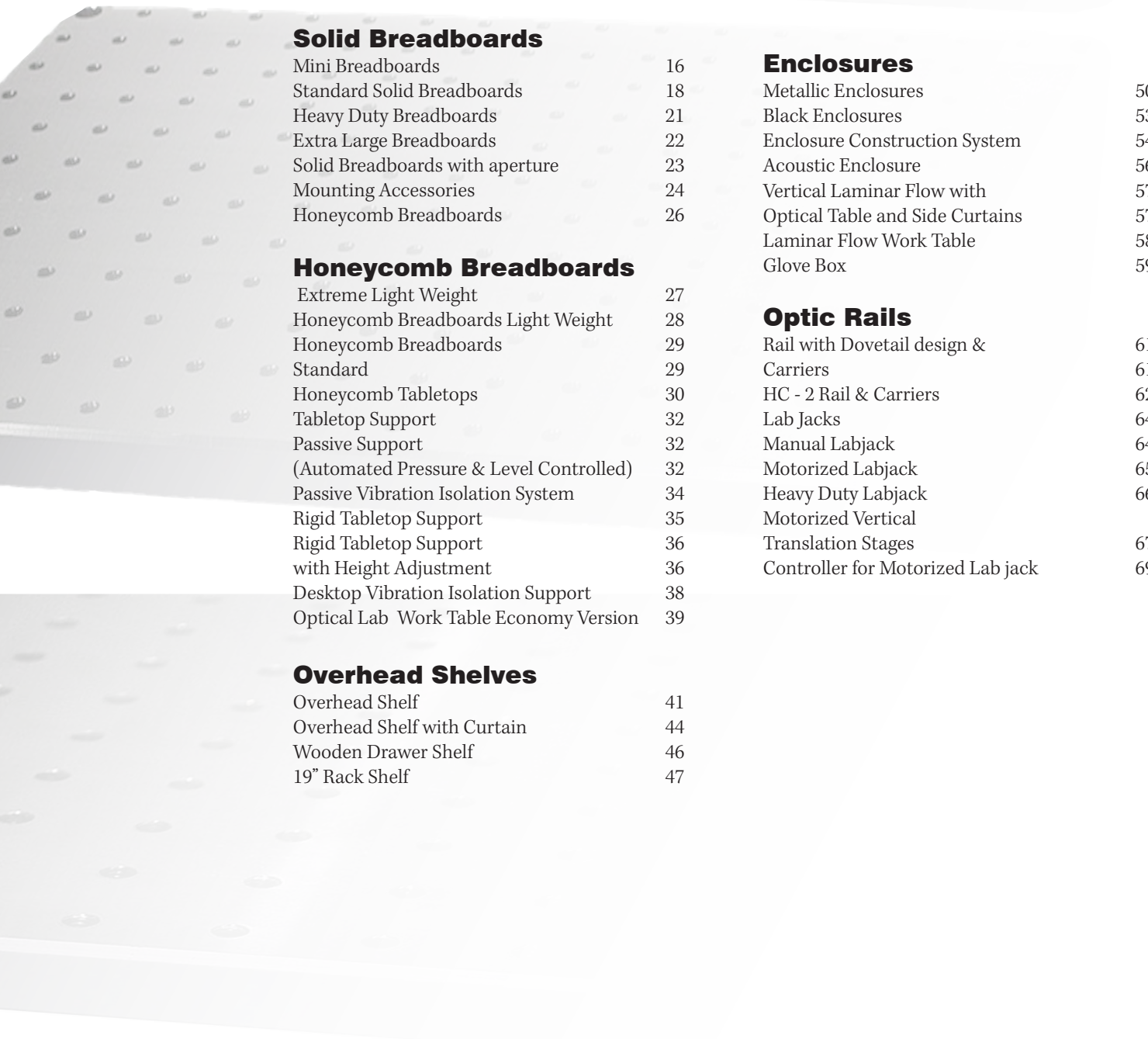
Black anodized finish
Solid 18 mm thick aluminum
construction



www.holmarc.com
contact us at

Email: sales@holmarc.com
Ph:+91 920-719-7771 +91 920-719-7772

B.7., HMT INDUSTRIAL ESTATE
KALAMASSERY
KOCHI- 683503, INDIA
CIN : U33125KL1993PLC006984
GST No: 32AAACH9492C1ZQ
MSME : UDYAM-KL-02-0043524



Solid Breadboards

Mini Breadboards	16
Standard Solid Breadboards	18
Heavy Duty Breadboards	21
Extra Large Breadboards	22
Solid Breadboards with aperture	23
Mounting Accessories	24
Honeycomb Breadboards	26

Honeycomb Breadboards

Extreme Light Weight	27
Honeycomb Breadboards Light Weight	28
Honeycomb Breadboards	29
Standard	29
Honeycomb Tabletops	30
Tabletop Support	32
Passive Support	32
(Automated Pressure & Level Controlled)	32
Passive Vibration Isolation System	34
Rigid Tabletop Support	35
Rigid Tabletop Support	36
with Height Adjustment	36
Desktop Vibration Isolation Support	38
Optical Lab Work Table Economy Version	39

Overhead Shelves

Overhead Shelf	41
Overhead Shelf with Curtain	44
Wooden Drawer Shelf	46
19" Rack Shelf	47

Enclosures

Metallic Enclosures	50
Black Enclosures	53
Enclosure Construction System	54
Acoustic Enclosure	56
Vertical Laminar Flow with	57
Optical Table and Side Curtains	57
Laminar Flow Work Table	58
Glove Box	59

Optic Rails

Rail with Dovetail design &	61
Carriers	61
HC - 2 Rail & Carriers	62
Lab Jacks	64
Manual Labjack	64
Motorized Labjack	65
Heavy Duty Labjack	66
Motorized Vertical	
Translation Stages	67
Controller for Motorized Lab jack	69

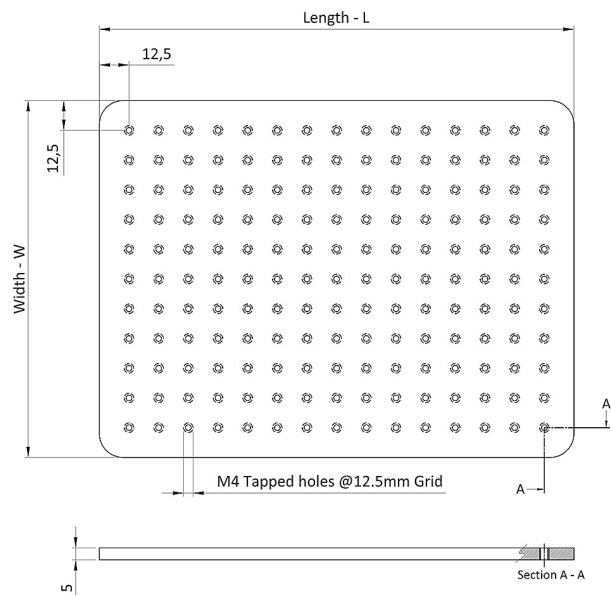
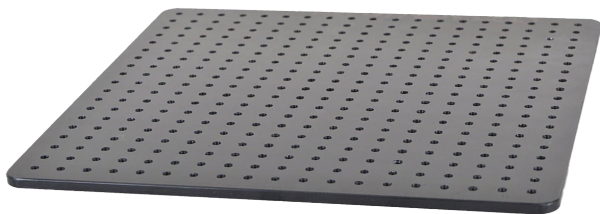
Solid Breadboards



Mini Breadboards

Mini breadboards are used mainly to construct small optical experimental setups. The thickness of mini breadboard is 5mm. There are M4 tapped holes on 12.5mm grid. These breadboards are also available in vacuum compatible version.

On request tapped holes other than M4 can be provided on any array.



Specifications

- 5 mm thick
- M4 Standard Tapped Holes on 12.5mm Grid
- Stainless Steel construction
- Satin Finish
- Machining Tolerance +/- 0.3 mm over 300 mm length
- Surface flatness +/- 0.15mm over 300 mm square area

CUSTOM SIZES
Made to order

Make your Choice !!! These BB series breadboards are available in various shapes, sizes and with different patterns of tapped holes other than standard models.

Please send us yours design or contact us at sales@holmarc.com

Specifications

Aluminium Anodized

Aluminium Model No:	Dimensions			Mounting
	L (mm)	W (mm)	T (mm)	Mounting Hole
MBB-75100-AL	100	75	5	M4
MBB-75150-AL	150	75	5	M4
MBB-75200-AL	200	75	5	M4
MBB-75250-AL	250	75	5	M4
MBB-100100-AL	100	100	5	M4
MBB-100150-AL	150	100	5	M4
MBB-100200-AL	200	100	5	M4
MBB-100250-AL	250	100	5	M4
MBB-150150-AL	150	150	5	M4
MBB-150200-AL	200	150	5	M4
MBB-150250-AL	250	150	5	M4
MBB-200200-AL	200	200	5	M4
MBB-200250-AL	250	200	5	M4
MBB-250250-AL	250	250	5	M4

Aluminium Non Anodized

Non Anodized	Dimensions			Mounting
	L (mm)	W (mm)	T (mm)	Mounting Hole
MBB-75100-NA	100	75	5	M4
MBB-75150-NA	150	75	5	M4
MBB-75200-NA	200	75	5	M4
MBB-75250-NA	250	75	5	M4
MBB-100100-NA	100	100	5	M4
MBB-100150-NA	150	100	5	M4
MBB-100200-NA	200	100	5	M4
MBB-100250-NA	250	100	5	M4
MBB-150150-NA	150	150	5	M4
MBB-150200-NA	200	150	5	M4
MBB-150250-NA	250	150	5	M4
MBB-200200-NA	200	200	5	M4
MBB-200250-NA	250	200	5	M4
MBB-250250-NA	250	250	5	M4

Stainless Steel

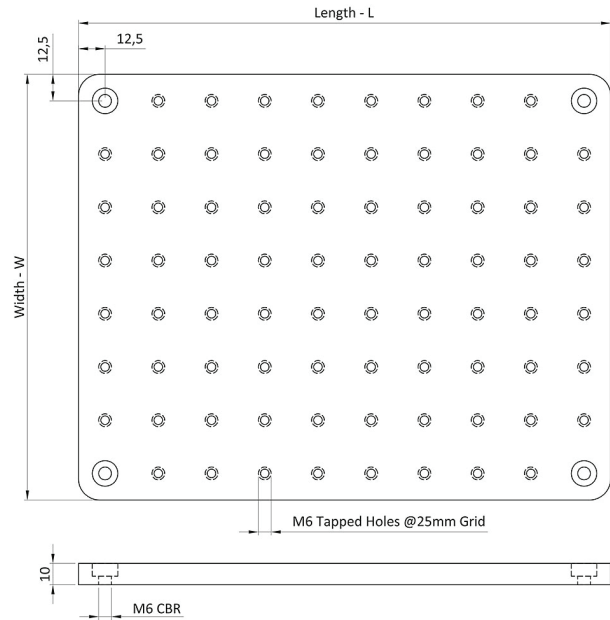
Stainless Steel Model No:	Dimensions			Mounting
	L (mm)	W (mm)	T (mm)	Mounting Hole
MBB-75100-SS	100	75	5	M4
MBB-75150-SS	150	75	5	M4
MBB-75200-SS	200	75	5	M4
MBB-75250-SS	250	75	5	M4
MBB-100100-SS	100	100	5	M4
MBB-100150-SS	150	100	5	M4
MBB-100200-SS	200	100	5	M4
MBB-100250-SS	250	100	5	M4
MBB-150150-SS	150	150	5	M4
MBB-150200-SS	200	150	5	M4
MBB-150250-SS	250	150	5	M4
MBB-200200-SS	200	200	5	M4
MBB-200250-SS	250	200	5	M4
MBB-250250-SS	250	250	5	M4

Standard Solid Breadboards

BB Series

Standard Solid Breadboards are commonly used platforms for building optical setups. It's thickness is 10mm. There are M6 tapped holes on 25mm grid. These breadboards are also available in vacuum compatible versions.

On request, tapped holes other than M6 can be provided on any array.



Specifications

10 mm thick

M6 Standard tapped holes on 25mm Grid

Aluminium construction

Black anodized finish for aluminium

Machining tolerance +/- 0.3 mm over 300 mm length

Surface flatness +/- 0.15mm over 300 mm square area

Tapped M6 holes on 25mm Grid

Solid 10 mm thick aluminum construction



CUSTOM
CONFIGURABLE

25
GRID PATTERN
MILLIMETER

Make your Choice !!! These BB series breadboards are available in various shapes, sizes and with different patterns of tapped holes other than standard models.

Please send us yours design or contact us at sales@holmarc.com

Stainless Steel Through holes

Aluminium through holes

Model No:	L (mm)	W (mm)	T (mm)	Mounting Hole
BB-100100-SS	100	100	10	M6
BB-200200-SS	200	200	10	M6
BB-200400-SS	400	400	10	M6
BB-300400-SS	400	400	10	M6
BB-400400-SS	400	400	10	M6
BB-400600-SS	600	600	10	M6

Customised Size

BB-L -W-AL-SS	L	W	10	M6
---------------	---	---	----	----

Aluminium through holes

Model No:	L (mm)	W (mm)	T (mm)	Mounting Hole
BB-100100-AL-T	100	100	10	¼-20
BB-100200-AL-T	200	100	10	¼-20
BB-150400-AL-T	400	150	10	¼-20
BB-200200-AL-T	200	200	10	¼-20
BB-200400-AL-T	400	400	10	¼-20
BB-300300-AL-T	300	300	10	¼-20
BB-300400-AL-T	400	400	10	¼-20
BB-400400-AL-T	400	400	10	¼-20
BB-400600-AL-T	600	600	10	¼-20

Customised Size

BB-L -W-AL-T	L	W	10	1/4-20
--------------	---	---	----	--------

Non Anodized Aluminium through holes

Model No:	L (mm)	W (mm)	T (mm)	Mounting Hole
BB-100100-AL-NT	100	100	10	¼-20
BB-200200-AL-NT	200	200	10	¼-20
BB-200400-AL-NT	400	200	10	¼-20
BB-300400-AL-NT	400	300	10	¼-20
BB-400400-AL-NT	400	400	10	¼-20

Customised Size

BB-L -W-AL-N	L	W	10	¼-20
--------------	---	---	----	------

Anodized Solid Aluminium Breadboard with M6 1/4 - 20 through Holes Dual Density

Aluminium through holes

Model No:	L (mm)	W (mm)	T (mm)	Mounting Hole
BB-100100-AL-DT	100	100	10	M6
BB-100200-AL-DT	200	100	10	M6
BB-150400-AL-DT	400	150	10	M6
BB-200200-AL-DT	200	200	10	M6
BB-200400-AL-DT	400	200	10	M6
BB-300300-AL-DT	300	300	10	M6
BB-300400-AL-DT	400	300	10	M6
BB-400400-AL-DT	400	400	10	M6
BB-400600-AL-DT	600	400	10	M6

Customised Size

BB-L -W-AL-D	L	W	10	M6
--------------	---	---	----	----

Anodized Solid Aluminium Breadboard with M6 through Holes Dual Density

Model No:	L (mm)	W (mm)	T (mm)	Mounting Hole
BB-100100-AL-D	100	100	10	M6
BB-100200-AL-D	200	100	10	M6
BB-150400-AL-D	400	150	10	M6
BB-200200-AL-D	200	200	10	M6
BB-200400-AL-D	400	200	10	M6
BB-300300-AL-D	300	300	10	M6
BB-300400-AL-D	400	300	10	M6
BB-400400-AL-D	400	400	10	M6
BB-400600-AL-D	600	400	10	M6

Customised Size

BB-L -W-AL-D	L	W	10	M6
--------------	---	---	----	----

Anodized Solid Aluminum breadboards- wit 1/4 - 20blind holes

Model No:	L (mm)	W (mm)	T (mm)	Mounting Hole
BB-100100-AL-BT	100	100	10	¼-20
BB-100200-AL-BT	200	100	10	¼-20
BB-150400-AL-BT	400	150	10	¼-20
BB-200200-AL-BT	200	200	10	¼-20
BB-200400-AL-BT	400	200	10	¼-20
BB-300300-AL-BT	300	300	10	¼-20
BB-300400-AL-BT	400	300	10	¼-20
BB-400400-AL-BT	400	400	10	¼-20
BB-400600-AL-BT	600	400	10	¼-20

Customised Size

BB-L -W-AL-BT	L	W	10	¼-20
---------------	---	---	----	------

Anodized Solid Aluminum breadboards- wit M6 blind holes

Model No:	L (mm)	W (mm)	T (mm)	Mounting Hole
BB-100100-AL-B	100	100	10	M6
BB-100200-AL-B	200	100	10	M6
BB-150400-AL-B	400	150	10	M6
BB-200200-AL-B	200	200	10	M6
BB-200400-AL-B	400	200	10	M6
BB-300300-AL-B	300	300	10	M6
BB-300400-AL-B	400	300	10	M6
BB-400400-AL-B	400	400	10	M6
BB-400600-AL-B	600	400	10	M6

Customised Size

BB-L -W-AL-B	L	W	10	M6
--------------	---	---	----	----

Solid magnetic ss breadboards with m6 blind holes (both side usable)

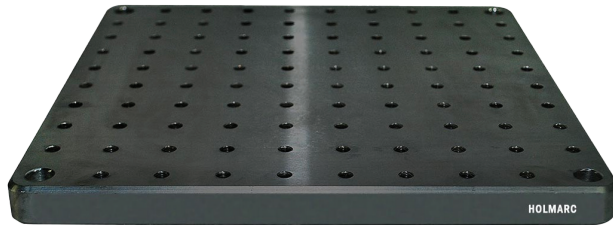
Model No:	L (mm)	W (mm)	T (mm)	Mounting Hole
BB-100100-SSM	100	100	10	M6
BB-200200-SSM	200	200	10	M6
BB-200400-SSM	400	200	10	M6
BB-300400-SSM	400	300	10	M6
BB-400400-SSM	400	400	10	M6
BB-400600-SSM	600	400	10	M6

Customised Size

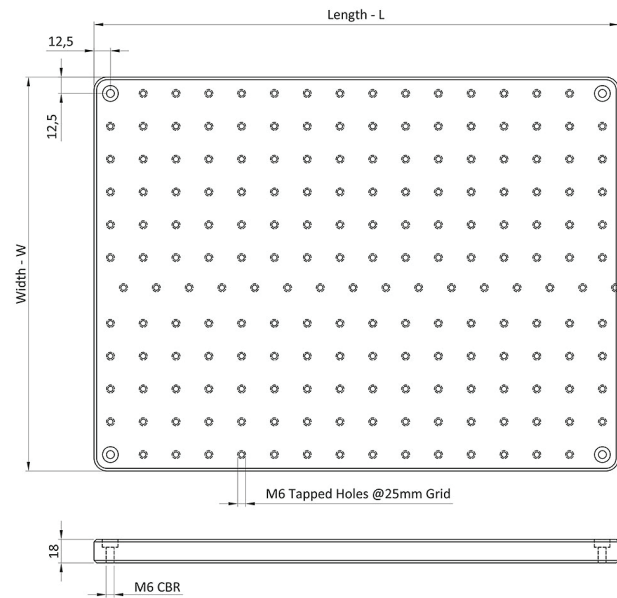
BB-L -W-AL-SSM	L	W	10	M6
----------------	---	---	----	----

Heavy Duty Breadboards

Heavy duty breadboards are available in 18mm thickness. These breadboards are heavy and can be used for building rigid optical setups.



18 mm thick
M6 standard tapped holes on 25mm grid
Aluminium alloy construction
Black anodized finish for aluminium alloy
Machining tolerance +/- 0.3 mm over 300 mm length
Surface flatness +/- 0.15mm over 300 mm square area



Aluminium through holes				
Model No:	L (mm)	W (mm)	T (mm)	Mounting Hole
HBB-300300-AL	300	300	10	M6
HBB-300400-AL	400	300	10	M6
HBB-400400-AL	400	400	10	M6
HBB-400600-AL	600	400	10	M6
Customised Size				
HBB-L -W-A	L	W	10	M6

Extra Large Breadboards



Aluminium extra large breadboards--with M6 through holes

Aluminium
through holes

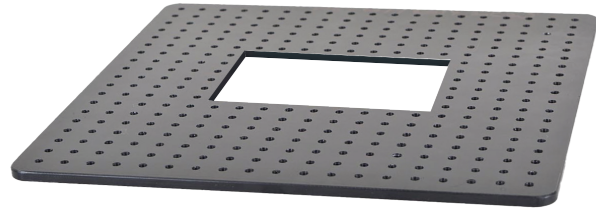
Model No:	L (mm)	W (mm)	T (mm)	Mounting Hole
EBB-500500-AL	500	500	12	M6
EBB-500600-AL	500	600	12	M6
EBB-600600-AL	600	600	12	M6
EBB-750750-AL	750	750	12	M6
EBB-800800-AL	800	800	12	M6
EBB-900900-AL	900	900	12	M6
EBB-900900-AL	900	900	12	M6

Aluminium extra large breadboards--Imperial standard through holes

Aluminium
through holes

Model No:	L (mm)	W (mm)	T (mm)	Mounting Hole
EBB-500500-AL-T	500	500	12	¼-20
EBB-500600-AL-T	500	600	12	¼-20
EBB-600600-AL-T	600	600	12	¼-20
EBB-750750-AL-T	750	750	12	¼-20
EBB-800800-AL-T	800	800	12	¼-20
EBB-900900-A	900	900	12	¼-20
EBB-900900-AL	900	900	12	¼-20

Solid Breadboards with aperture



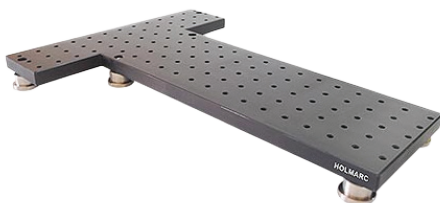
U Shaped Aluminium breadboards

Aluminium breadboards with centre aperture

U Shaped Magnetic Stainless Steel breadboards

Magnetic SS breadboards with centre aperture

Custom Breadboards & Support



CUSTOM SIZES
Made to order

Mounting Accessories

Angle Brackets : HOLMARC Angle Brackets are rigid, angled mounting plates with slotted faces. They are designed to mount aluminium breadboards to an optical table for achieving vertical or angled working surface. The 30, 45 and 90 degree angles are accurate upto +/- 0.05 degree.

90° Bracket : is designed to mount aluminium breadboard perpendicular to optical table for achieving vertical working surface.



Fig. 45B-AL Vertical 45 Degree Angle Brackets

SPECIFICATIONS

Material	Aluminium Alloy
Treatment	Anodized
Color	Black
Machining Tolerance	+/- 0.3 mm over 300 mm length
Thickness	15mm +/- 0.5mm
Mounting angle	90° / 45°
Surface Finish	Satin Finish
Mounting Holes	M6 tapped holes at 25mm Grid

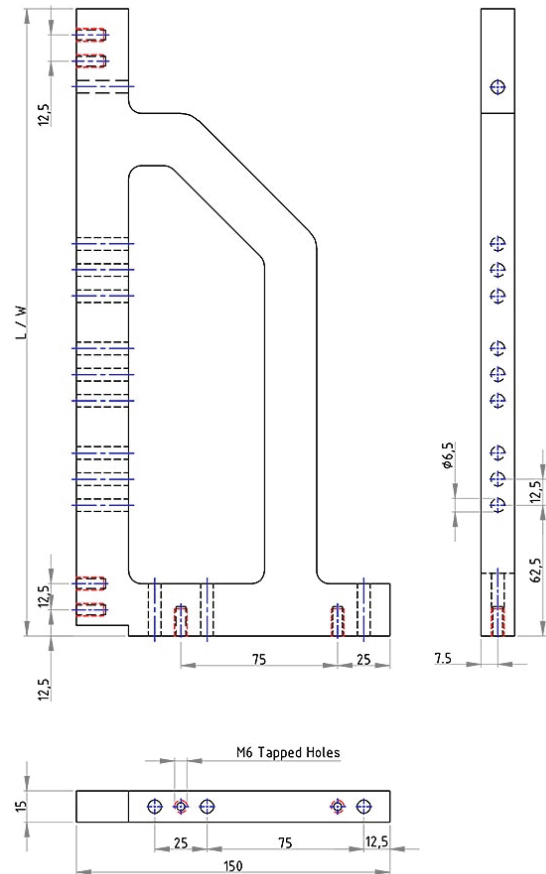


Fig. 90B-AL Vertical 90 Degree Angle Brackets with Standard Solid Breadboard

MODEL 90B-100-AL**MODEL 90B-250-AL**

90° Bracket		Aluminium Black Anodized	
Model No:	L / W (mm)	T (mm)	Mounting Hole
90B-100-AL	100	15	M6 CLR
90B-150-AL	150	15	M6 CLR
90B-200-AL	200	15	M6 CLR
90B-250-AL	250	15	M6 CLR
90B-300-AL	300	15	M6 CLR
90B-350-AL	350	15	M6 CLR

45° Bracket		Aluminium Black Anodized	
Model No:	L / W (mm)	T (mm)	Mounting Hole
45B-100-AL	100	15	M6 CLR
45B-150-AL	150	15	M6 CLR
45B-200-AL	200	15	M6 CLR
45B-250-AL	250	15	M6 CLR
45B-300-AL	300	15	M6 CLR
45B-350-AL	350	15	M6 CLR

Accessories:

Our breadboards are compatible with a variety of accessories, including:

Brackets

Leveling Feet

Handles

Posts

For detailed information on available accessories, please refer to our Accessories Page

Custom Product configurations

Breadboard with custom hole pattern
 Custom mounting accessories
 Breadboard with custom profiles

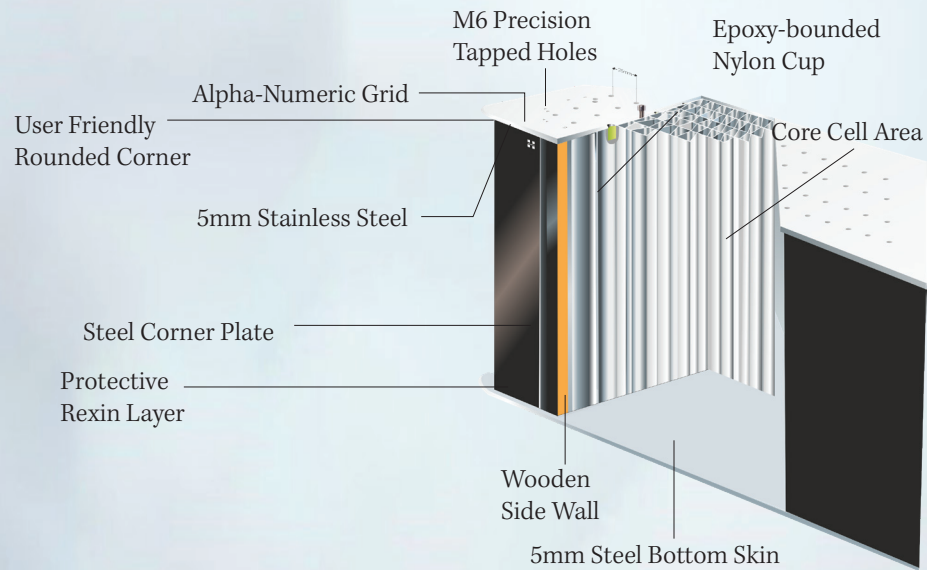
Breadboard Vertical Mounting Accessories**<< 90° Bracket**

90° Bracket is designed to mount aluminium breadboard perpendicular to optical table to achieve vertical working surface



Fig. 90B-AL Vertical 90 Degree Angle Brackets

Honeycomb Breadboards



Optical LAB Work Table (Economy Version) EDU 2001 Series

HOLMARC EDU 2001 Series is an easy-to-assemble optical work table based on a lightweight honeycomb optical breadboard. The worktable is supported on all 4 sides by steel sheet frames and are designed to be lightweight, portable and rigid support for optical breadboards. Working height of EDU 2001 Series worktable is 750mm including optical breadboard.



Honeycomb Breadboards Extreme Light Weight

Extreme light weight breadboards are available in various sizes. These models are only 30mm thick. It has honeycomb core made of aluminium to reduce weight. These breadboards are perfect for optical systems where mobility is more important than high level of rigidity and damping.

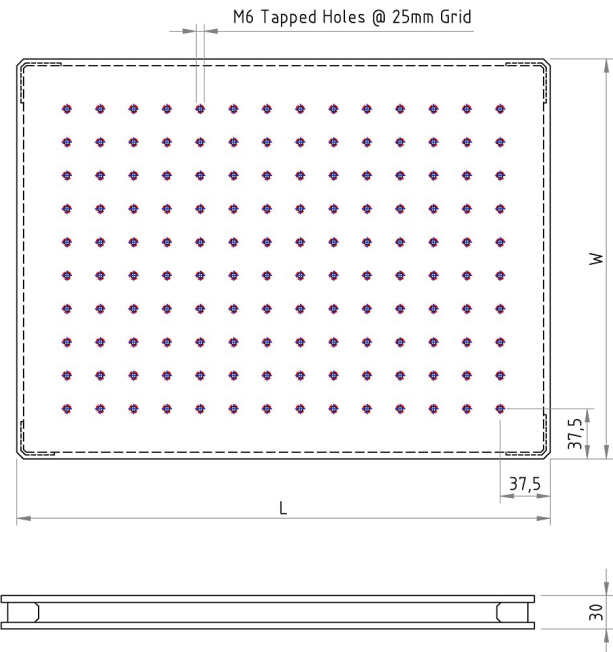


30mm thickness

Aluminium honeycomb core

Specifications

- Thickness : 30 mm
- 3 mm thick magnetic SS top skin (SS410)
- Bottom skin made of 2 mm thick epoxy coated aluminium
- Aluminium honeycomb core
- Core cell size of 6 sq. cm.(Approx.)
- Nylon cups under each tapped hole
- + / - 0.1 mm flatness on top over 300 mm x 300 mm area (non-cumulative error)
- M6 tapped holes at 25 mm grid
- Distance of the first row of mounting holes from the edge is 37.5 mm
- Semi solid epoxy bonding
- Side walls finished with black form sheet having matte finish



Non magnetic breadboards are used where the Optical experiment setups to be built are sensitive to magnetic properties of breadboard construction materials. These special breadboards are constructed of 304 grade stainless steel on top and aluminium on bottom part. This alloy of steel contains less iron than typical stainless steel, which reduces its ferromagnetic properties. The honeycomb structure is constructed from aluminium.



Honeycomb Breadboards Extreme Light Weight - Magnetic

Model No:	L (mm)	W (mm)
ELLBB 60-30	60	30
ELLBB 60-60	60	60
ELLBB 90-60	90	60
ELLBB 90-90	90	90
ELLBB 120-90	120	90
ELLBB 120-120	120	120
ELLBB 180-120	180	120

Honeycomb Breadboards Extreme Light Weight - Non Magnetic

Model No:	L (mm)	W (mm)
ELLNMBB 60-30	60	30
ELLNMBB 60-60	60	60
ELLNMBB 90-60	90	60
ELLNMBB 90-90	90	90
ELLNMBB 120-90	120	90
ELLNMBB 120-120	120	120
ELLNMBB 180-120	180	120

Honeycomb Breadboards Light Weight

Light weight breadboards are constructed using 3mm thick ferromagnetic stainless steel sheet as top skin and 2mm thick aluminium sheet as bottom skin. It has honeycomb core made of aluminium to reduce weight. These light weight breadboards exhibit high natural frequency and nominal broadband damping.

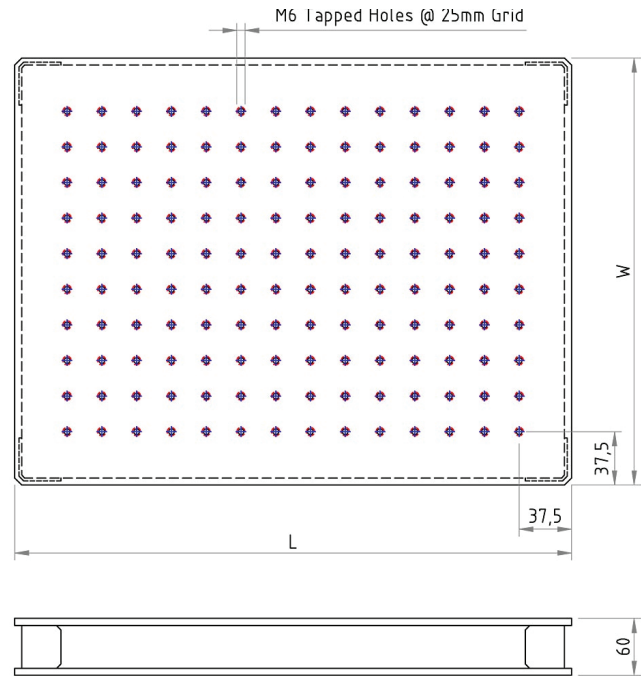
We also manufacture non-magnetic version of these breadboards. In these breadboards top skin and bottom skin are made of non-magnetic stainless steel.



**Top skin plate: magnetic
SS 3mm thick**
**Bottom skin plate: 2 mm
thick epoxy coated**



Non magnetic breadboards are used where the Optical experiment setups to be built are sensitive to magnetic properties of breadboard construction materials. These special breadboards are constructed of 304 grade stainless steel on top and aluminium on bottom part. This alloy of steel contains less iron than typical stainless steel, which reduces its ferromagnetic properties. The honeycomb structure is constructed from aluminium.



Specifications

Thickness : 60 mm

3mm thick magnetic SS top skin (SS410)/(SS304)

Bottom skin made of 2 mm thick epoxy coated aluminium

Aluminium honeycomb core

Core cell size of 6 sq. cm.(Approx.)

Nylon cups under each tapped hole

+ / - 0.1 mm flatness on top over 300 mm square area

M6 tapped holes at 25 mm grid

Distance of the first raw of mounting holes from the edge is 37.5 mm

Semi solid epoxy bonding

Side walls finished with black form sheet having matte finish

Compressed wooden particle boards as side walls to damp acoustic vibrations.

Honeycomb Breadboards Light Weight - Magnetic

Model No:	L (mm)	W (mm)
LLBB 60-30	60	30
LLBB 60-60	60	60
LLBB 90-60	90	60
LLBB 90-90	90	90
LLBB 120-90	120	90
LLBB 120-120	120	120
LLBB 180-120	180	120

Honeycomb Breadboards Light Weight - Non Magnetic

Model No:	L (mm)	W (mm)
LLNMBB 60-30	60	30
LLNMBB 60-60	60	60
LLNMBB 90-60	90	60
LLNMBB 90-90	90	90
LLNMBB 120-90	120	90
LLNMBB 120-120	120	120
LLNMBB 180-120	180	120

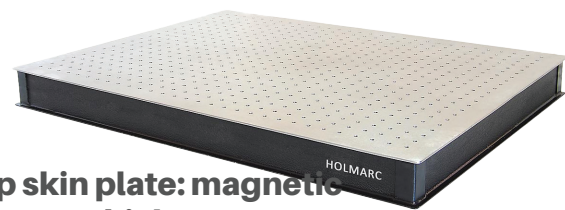
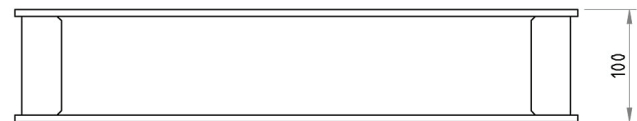
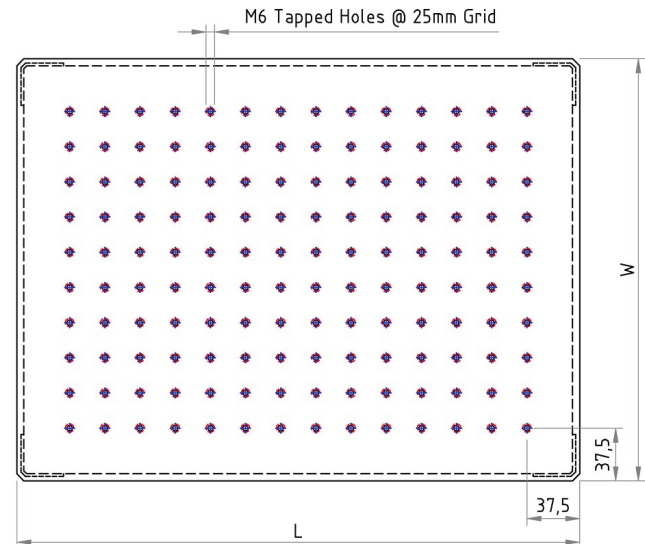
Honeycomb Breadboards

Standard

Honeycomb breadboards from Holmarc use magnetic stainless steel (SS410 series) as top skin. Core of the breadboard is honeycomb structure made from aluminium. Thickness of these breadboards generally vary between 60 mm and 100 mm. Honeycomb breadboards can be placed on any working tables to quickly build optical working surfaces which will add the convenience of tapped holes grid in addition to the rigidity and stability of honeycomb structure. These can as well be used to build extra elevated working surfaces on optical tables. With suitable angle brackets and clamps, vertical working surfaces can also be created.

Specifications

- 5 mm thick magnetic SS top skin (SS410) /(SS304)
- Bottom skin : 5 mm thick epoxy coated steel
- 0.25 mm thick aluminium honeycomb core
- Core cell size of 6 sq. cm.(approx.)
- Nylon cups under each tapped hole
- +/- 0.1 mm flatness on top over 300 mm x 300 mm area (non-cumulative error)
- M6 tapped holes on 25 mm grid
- Distance of the first row of mounting holes from the edge is 37.5 mm
- Semi solid epoxy bonding
- Side walls finished with black form sheet (matte finish)
- Compressed wooden particle boards as side walls to dampen acoustic vibrations.



Top skin plate: magnetic SS 5mm thick

Bottom skin plate: 5 mm thick epoxy coated steel



Honeycomb Breadboards Standard - Magnetic

Model No:	Length (mm)	Width (mm)	Height (mm)
BB 60-30	600	300	60
BB 60-60	600	600	60
BB 90-60	900	600	100
BB 90-90	900	900	100
BB 120-90	1200	900	100
BB 120-120	1200	1200	100
BB 180-120	1800	1200	100

Honeycomb Breadboards Standard - Non Magnetic

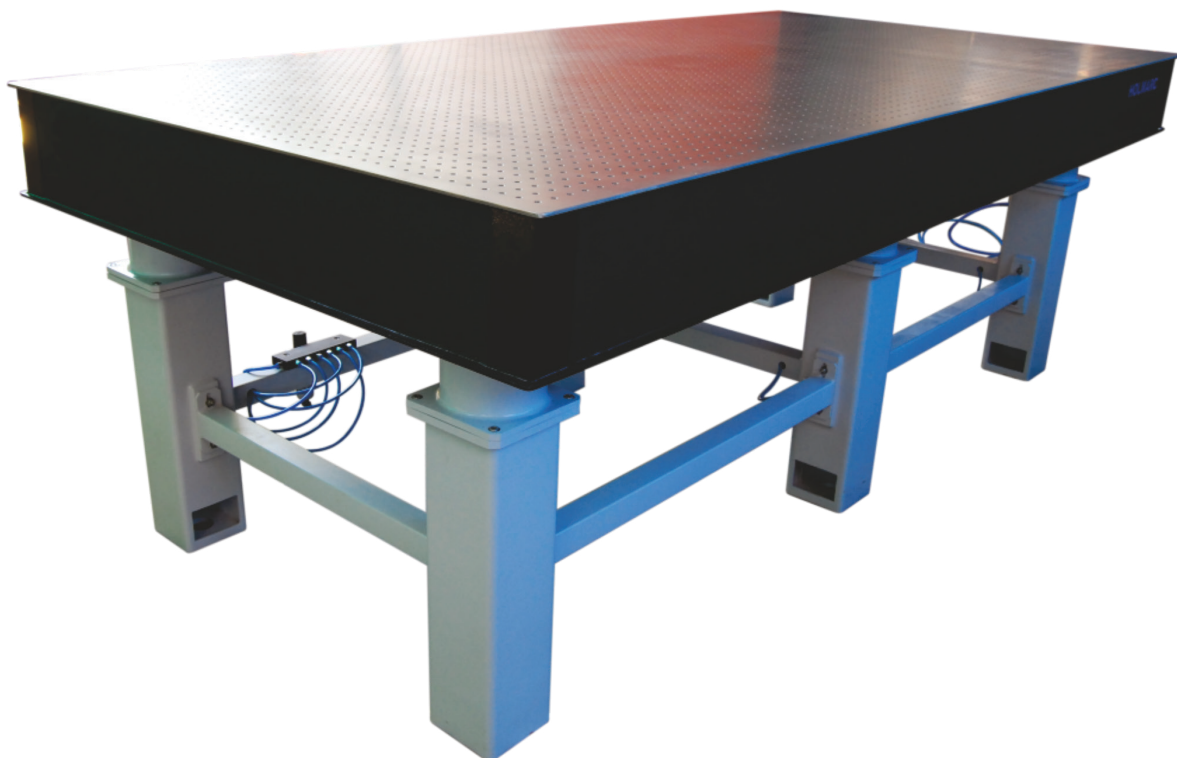
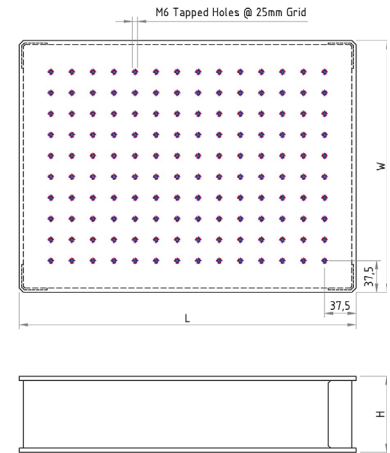
Model No:	Length (mm)	Width (mm)	Height (mm)
BBNM 60-30	600	300	60
BBNM 60-60	600	600	60
BBNM 90-60	900	600	100
BBNM 90-90	900	900	100
BBNM 120-90	1200	900	100
BBNM 120-120	1200	1200	100
BBNM 180-120	1800	1200	100

Honeycomb Tabletops

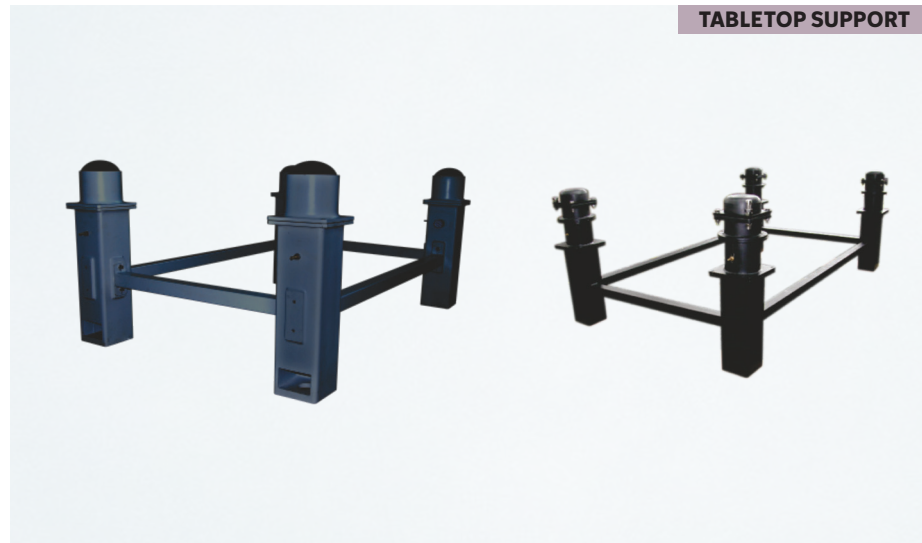
Honeycomb tabletops from Holmarc provide rigid and stable optical working surfaces with the convenience of tapped holes at 25mm grid for mounting components and modules. Honeycomb core made of 0.25mm thick aluminium sheet. Though compressed particle boards are used as side walls in most cases due to its vibration damping properties, Holmarc can also provide tabletops with steel and aluminium side walls. Semi-solid epoxy is used to construct the honeycomb core as well as to bind top and bottom skins to the core. This special epoxy binding absorbs low frequency vibrations to a certain extent and provide considerable damping even without the use of isolated supports.

Specifications

5 mm thick non-magnetic SS top skin (SS410) /
0.25 mm thick aluminium honeycomb core
Core cell size of 6 sq. cm.(approx.)
Nylon cups under each tapped hole
+/- 0.1 mm flatness on top over 300 mm x 300 mm area (non-cumulative error)
M6 tapped holes at 25 mm grid
Distance of the first row of mounting holes from the edge is 37.5 mm
Semi solid epoxy bonding
Side walls finished with black form sheet having matte finish
Compressed wooden particle boards as side walls to dampen acoustic vibrations.



Honeycomb non magnetic tabletops are used where the Optical experiment setups to be built on top of the tabletops are sensitive to magnetism. These special tabletops are constructed of 304 grade stainless steel on top and bottom part. This alloy of steel contains less iron than typical stainless steel, which reduces its ferromagnetic properties. The honeycomb structure is constructed from aluminium.



Specifications

5 mm thick non-magnetic SS top skin (SS304)

Bottom skin made of 5 mm thick epoxy coated non-magnetic steel (SS304)

0.25 mm thick aluminium honeycomb core

Core cell size of 6 sq. cm.(approx.)

Nylon cups under each tapped hole

+/- 0.1 mm flatness on top over 300 mm x 300 mm area (non-cumulative error)

M6 tapped holes at 25 mm grid

Distance of the first row of mounting holes from the edge is 37.5 mm

Semi solid epoxy bonding

Side walls finished with black form sheet having matte finish

Compressed wooden particle boards as side walls to dampen acoustic vibrations.

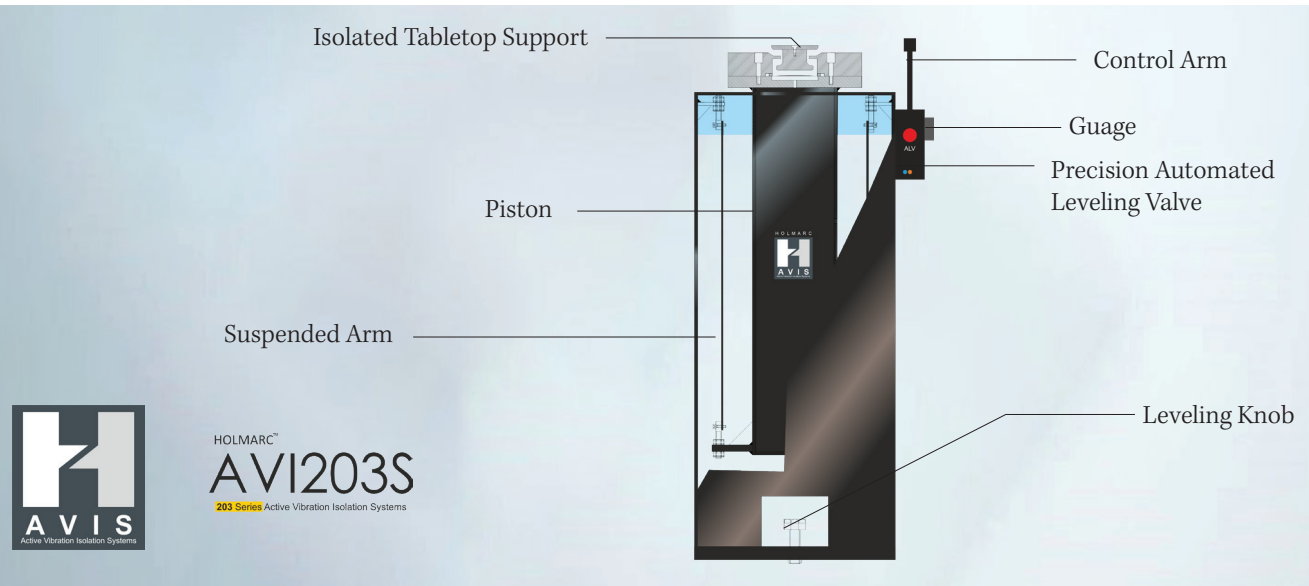
Honeycomb Tabletops- Magnetic (SS410)

Model No:	Length (mm)	Width (mm)	Height (mm)
TT 90-90	90	90	15
TT 120-90	120	90	15
TT 120-120	120	120	15
TT 180-120	180	120	20
TT 240-120	240	120	20
TT 300-120	300	120	20
TT 180-150	180	150	20
TT 240-150	240	150	20
TT 300-150	300	150	20
TT 360-150	360	150	20

Honeycomb Tabletops- Non Magnetic (SS304)

Model No:	Length (mm)	Width (mm)	Height (mm)
TTNM 90-90	90	90	15
TTNM 120-90	120	90	15
TTNM 120-120	120	120	15
TTNM 180-120	180	120	20
TTNM 240-120	240	120	20
TTNM 300-120	300	120	20
TTNM 180-150	180	150	20
TTNM 240-150	240	150	20
TTNM 300-150	300	150	20
TTNM 360-150	360	150	20

Tabletop Support



AVI203S & AVI204S AVI Series

Passive Support (Automated Pressure & Level Controlled)

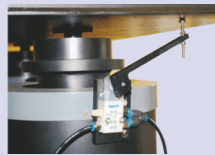
HOLMARC's Passive Support - Automated Pressure & Level Controlled vibration isolation system that effectively isolates the optical table from vertical and horizontal vibrations throughout the critical 3 to 50 Hz frequency range, since most common large-amplitude sources of vibrations found in laboratories vibrate within this range of frequencies. If the source of compressed air is removed,

the Optical Tabletop will lower until it securely rests on the supports and the table will no longer be isolated from floor vibrations.

Our AVI Series automated optical table supports can be used to significantly reduce the vibrations transmitted to an optical table setup in a noisy environment



Fig. AVI203S Series
Active vibration isolation
system with TT 240-120
Honeycomb Tabletop



Pneumatic Isolation Pressure Valve



- **Featured vibration isolator technology**
- **Superior vibration control**
- **Maintenance free operation**
- **Specially designed for Interferometry and other high vibration sensitive experiments**



Holmarc™ **AVIS**
Active Vibration Isolation Systems & Controls



All Products are manufactured and marketed by
HOLMARC™ Opto-Mechatronics Pvt. Ltd

Specifications

Vertical Resonant Frequency	1.25 Hz
Horizontal Resonant Frequency	1.0 Hz
Vertical Transmissibility at Resonance	10 dB
Horizontal Transmissibility at Resonance	12 dB
Vertical Transmissibility at 5Hz	-20 dB (90%)
Horizontal Transmissibility at 5Hz	-24 dB (94%)
Vertical Transmissibility at 10Hz	-32.5 dB (97.5%)
Horizontal Transmissibility at 10Hz	-30 dB (97%)
Maximum Load Capacity (set of four)	600 - 800 kg
Height Adjustment Range	-10 mm, +5 mm
Self Leveling Repeatability	± 0.5 mm
Height	700 mm
Air Pressure (Maximum)	80 psi
Finish	Black Paint
The specification data above was measured under a 600 kg load (24% of max)	

Model No:	Suitable for Tabletop Model
AVI203S-4	Tables up to TT 120-240
Includes four numbers of AVI203S along with compressor and accessories for interconnection	

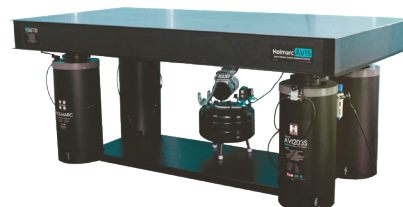
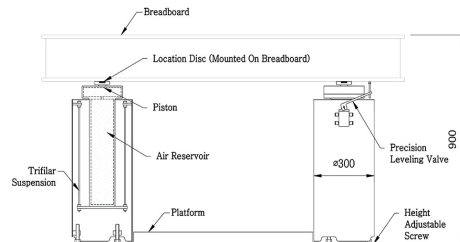
AVI203S-6	Tables above TT 120-240
Includes six numbers of AVI203S along with compressor and accessories for interconnection.	

Accessories

Accessories	Accessory Order Code
Overhead Table Shelf	OTS
Faraday Cages	FCU
Transparent Enclosure	TEU
Semi Transparent Enclosure	SEU
Opaque Full body Enclosure	OEU
Central Rack	CRS
Bottom Rack	BRS
Arm Rest & Support Rails	ARS

Accessories code can be added along with the rigid tabletop support model number under bracket for ordering. Eg. RTS 120-120 (OTS, ARS, BRS, SEU)

Model No	Diameter	Height	Load Capacity
AVI2303S	300mm	700mm	350kg
AVI204S	200mm	700mm	250kg



For more products and informations, please log on to www.holmarc.com or contact us at sales@holmarc.com

Passive Vibration Isolation System

Interconnected Legs

In PVISI series passive vibration isolation systems, isolated legs are interconnected by pneumatic tubes for air filling. Air can be filled through the inlet valve in one of the isolators. Once the air is pumped using a compressor, it is uniformly distributed to all the isolator legs. The pressure of air to be filled is 25-35

PSI. Air filter is provided to supply moisture free air to the system to avoid condensation in air. Air needs to be filled in the legs at least once in a month.

Isolated supports isolates the table top from vertical and horizontal disturbances. The system has vertical and horizontal natural frequencies of 4 - 8 Hz and effectively isolates vibrations in the critical range of 10- 50 Hz.



PVISI
SERIES

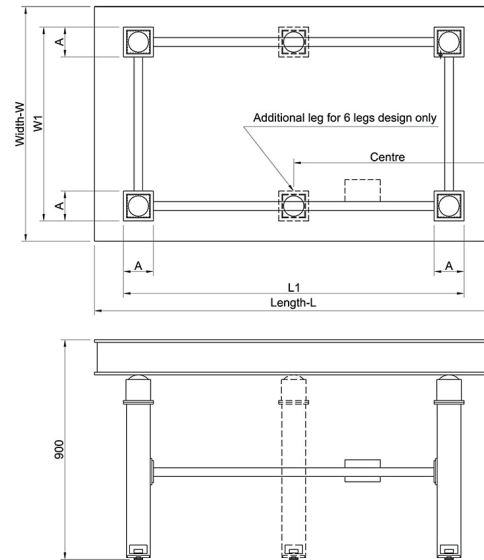
Anti Vibration Components

Easy installation & maintenance free

Selectable in Independent or Interconnected Legs options

Model No	Suitable for Tabletop Model	L x W (mm)	L1 x W1 (mm)	A (mm)	No. of Legs
PVISI 60-60	TT 60-60	600 x 600	500 x 500	135	4
PVISI 90-60	TT 90-60	900 x 600	800 x 500	135	4
PVISI 90-90	TT 90-90	900 x 900	800 x 800	135	4
PVISI 120-90	TT 120-90	1200 x 900	1000 x 700	135	4
PVISI 120-120	TT 120-120	1200 x 1200	820 x 820	135	4
PVISI 180-120	TT 180-120	1800 x 1200	1420 x 820	135	4
PVISI 240-120	TT 240-120	2400 x 1200	2020 x 820	135	4
PVISI 300-120	TT 300-120	3000 x 1200	2620 x 820	135	6
PVISI 180-150	TT 180-150	1800 x 1500	1420 x 820	135	4
PVISI 240-150	TT 240-150	2400 x 1500	2020 x 1120	135	4
PVISI 300-150	TT 300-150	3000 x 1500	2620 x 1120	135	6
PVISI 360-150	TT 360-150	3600 x 1500	3220 x 1120	135	6

Note: For larger Tabletops, 6 or 8 legs have to be used depending on load. Motorized pump is supplied along with the system.



**Isolation of Vibration
Reduce Noise
Transmission**

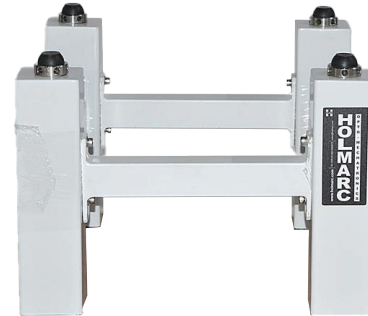
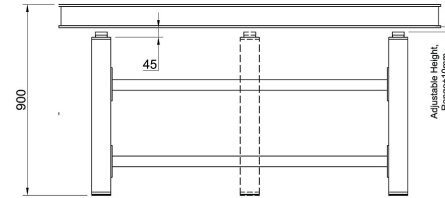
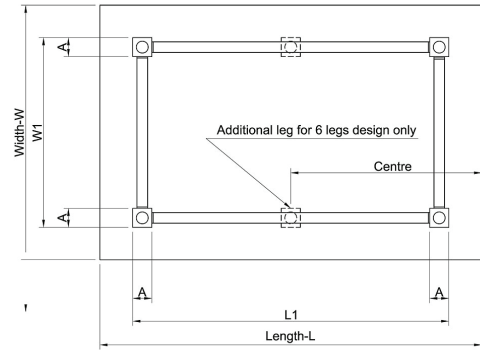


Accessories	Accessory Code
Overhead Table Shelf	OTS
Faraday Cage	FSC
Transparent, Semitransparent & Opaque Full Body Endosure	TEU, SEU & OEU
Central Rack	CRS
Bottom Rack	BRS
Heavy Duty Casters	HDC

RTS - SERIES

Rigid Tabletop Support

Rigid table top support system has four vertical members made from rectangular steel tubes and eight horizontal members made from 50 mm x 50 mm steel tubes. These members can be joined by nuts & bolts at the lab site. The honeycomb surface rest on four heavy-duty bolts on the top of the support system, which can also be adjusted for leveling. The adjustment range is +/- 4 cm. The support system is given moon light finish by epoxy paint.



Motorised Pump Model : CP-100

Note: For larger Tabletops, 6 or 8 legs have to be used depending on load. Motorized pump is supplied along with the system.



Model No	Suitable for Tabletop Model	L x W (mm)	L1 x W1 (mm)	A (mm)	No. of Legs
RTS 60-60	TT 60-60	600 x 600	500 x 500	90	4
RTS 90-60	TT 90-60	900 x 600	800 x 500	90	4
RTS 90-90	TT 90-90	900 x 900	800 x 800	90	4
RTS 120-90	TT 120-90	1200 x 900	1000 x 700	90	4
RTS 120-120	TT 120-120	1200 x 1200	820 x 820	90	4
RTS 180-120	TT 180-120	1800 x 1200	1420 x 820	90	4
RTS 180-150	TT 180-150	1800 x 1500	1420 x 1120	90	4
RTS 240-120	TT 240-120	2400 x 1200	2020 x 820	135	4
RTS 240-150	TT 240-150	2400 x 1500	2020 x 1120	135	6
RTS 300-120	TT 300-120	3000 x 1200	2620 x 820	135	6
RTS 300-150	TT 300-150	3000 x 1500	2620 x 1120	135	6
RTS 360-150	TT 360-150	3600 x 1500	3220 x 1120	135	6

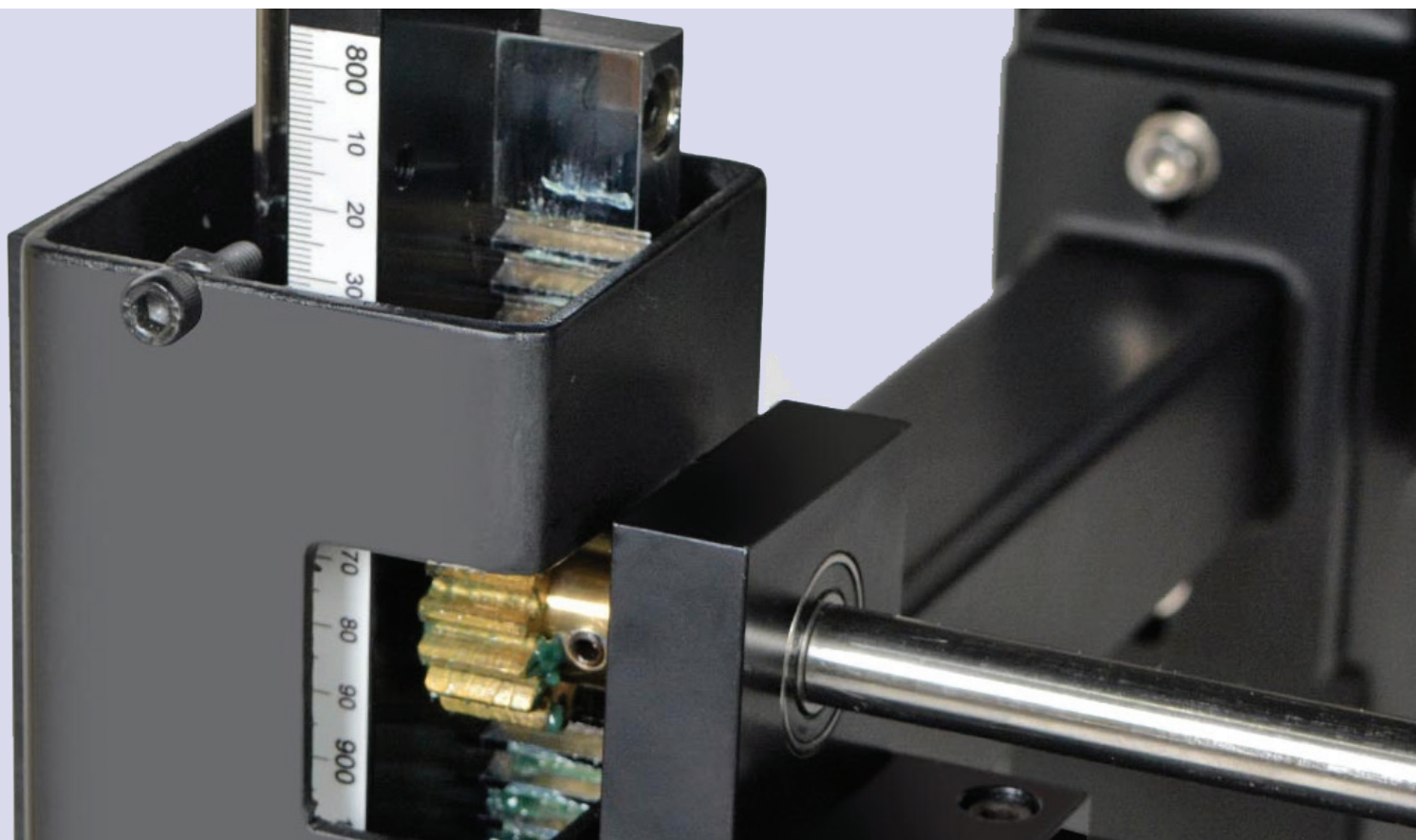
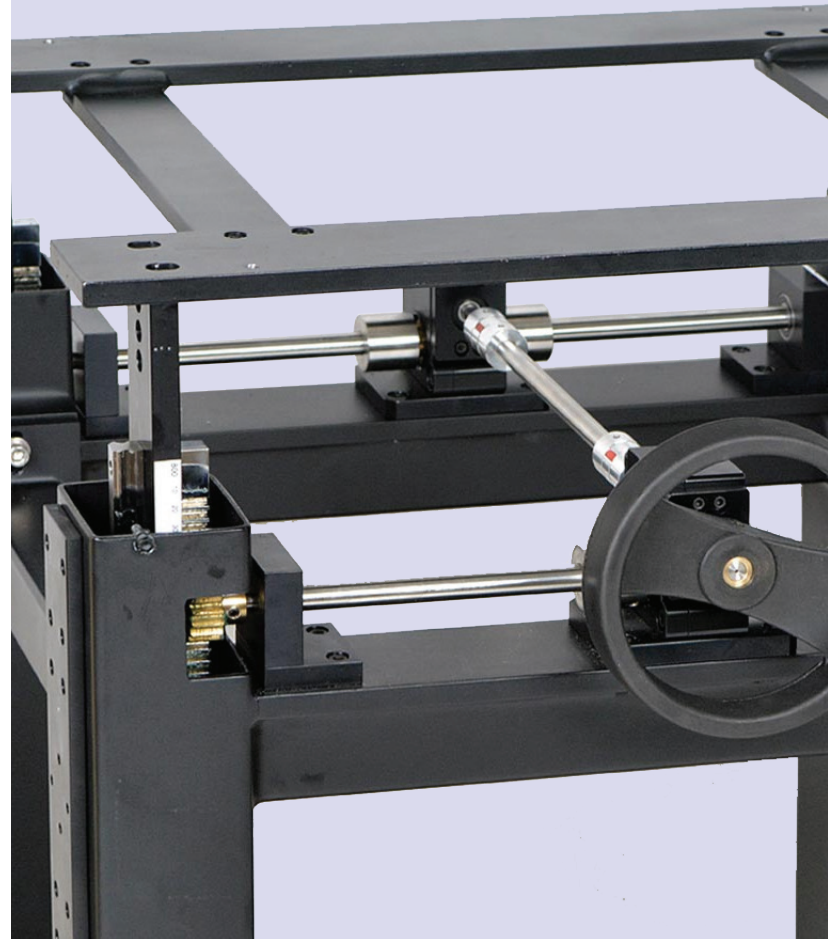
Note: For larger Tabletops, 6 or 8 legs have to be used depending on load. Motorized pump is supplied along with the system.

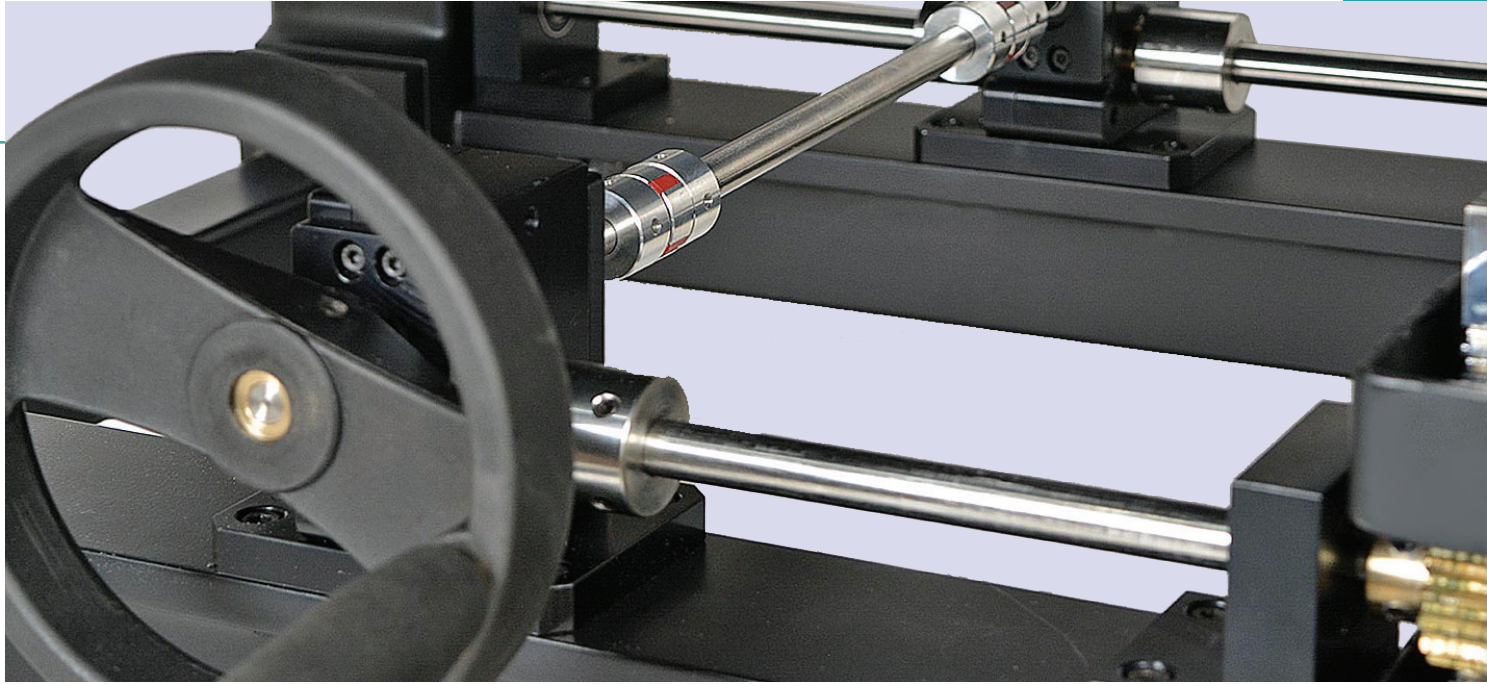
Rigid Tabletop Support with Height Adjustment

This support system has four vertical members made from rectangular steel tubes and eight horizontal members made from 50 mm x 50 mm steel tubes. These members can be joined by nuts & bolts at the lab site. The honeycomb surface rests on four heavy-duty bolts on the top of the support system, which can also be adjusted for levelling. The support system is given black finish by epoxy paint.

Specifications

Breadboard support size	900 x 600 x 100 mm
Height adjustment range	+300 mm
Height adjustment mechanism	Screw adjustment with hand wheel
Caster wheel and knob locking mechanism	
The leg dimensions	75 x 75 mm
A graduation scale in one of the table legs in mm	
The material such as MS square tube, resin bushing and Hardened steel guide rods are used.	
Locking screws for each leg to avoid shake / backlash	
Lift of the table will be uniform in the horizontal plane	



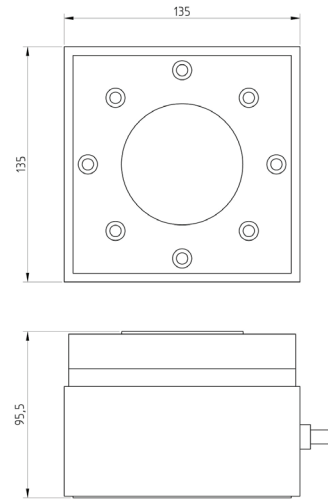


Model : DVIS - 01

Desktop Vibration Isolation Support

Holmarc's desktop vibration isolation supports are designed to use with breadboards and small optical tables. They provide portability and localized air suspension for small-scale experiments and vibration sensitive instrumentation. This system utilizes air isolation method for vibration isolation. These are time and space saving isolators which are ideal to use with microscopes and

other optical systems. Four independent air cushion legs along with an oil free air compressor are required for a setup. The system gets ready for use by just placing breadboards / tabletops on to these supports. DVIS Supports a wide range of breadboards and optical table sizes. Though normally supplied as a set of four, extra mounts can be used to increase load capacity.



Rigid, non-isolating support frame can be upgraded to desktop vibration isolation support. Contact our technical support engineer at service@holmarc.com. Note : Optical breadboard must be purchased separately,

Top Skin
5mm thick magnetic stainless steel (SS410 series) sheet as top skin.

Bottom Skin
5mm thick steel sheet as bottom skin.

Equipped with Pneumatic controller unit

Specially designed for high vibration sensitive instrumentation

- Model : Suitable for Optical Breadboard
- DVIS - 01 : Light weight series (suitable for breadboards upto 4 ft x 3 ft)

Honeycomb Breadboard Standard (BB Series)

These light weight breadboards exhibit high natural frequency and nominal broadband damping.

Oil free air compressor

Oil free air compressor will be supplied along with the Desktops Vibration Isolation Support.

Pneumatic Controller Unit

Regulator Unit, Manifold and Pressure Gauge are kept inside. Once the air is pumped using a compressor, it is uniformly distributed to all the isolator legs.

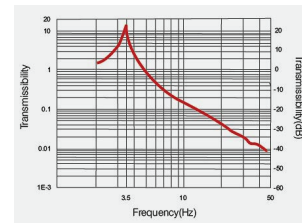


Fig. Desktops Vibration Isolation support Transmissibility Graph

Desktops Vibration Isolation Support



The breadboard sits on four inflated rubber cushions. All the four supports can either be independent or interconnected. In the case of interconnected legs compressor is supplied along with the system

The breadboard sits on four inflated rubber cushions. All the four supports will be independent. Portable foot pump will be supplied along with the support

Model : EDU 2001

Optical Lab Work Table Economy Version

Holmarc EDU 2001 Series is an easy to assemble optical work table based on a light weight honeycomb optical breadboard. The work table is supported on all 4 sides by steel sheet frames and are designed to be light weight, portable and rigid support for optical breadboards. Working height of EDU 2001 Series work table is 750 mm including optical breadboard.

Model	Length (cm)	Width (cm)
EDU 2001-L66	60	60
EDU 2001-L96	90	60

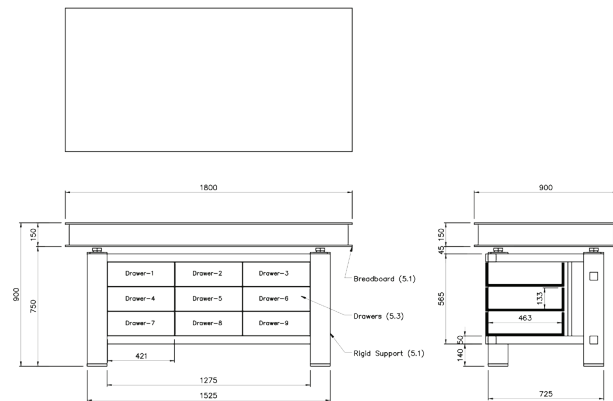
CUSTOM WORK TABLES

**Bread board
with single rigid
support**



Overhead Shelves

CANTILEVER TYPE Overhead Shelf



HOLMARC offers optical table shelves to meet your need for more organized and ergonomic lab space. Shelves are designed to be highest quality and sturdy to provide safe and reliable accessory options. Overhead shelves can be used for mounting vibration producing equipment above the optical breadboard. The height of shelf can be easily adjusted. Shelves can be positioned at any position along the rail.

Model No:	Supported Breadboard (L)
OHS-B-1200	1200 mm
OHS-B-1500	1500 mm
OHS-B-1800	1800 mm
OHS-B-2400	2400 mm
OHS-B-3000	3000 mm

Overhead Shelf - Cantilever	
Platform size	1800 mm (L) × 600 mm (W)
Number of platforms	2
Minimum height from table	400 mm
Maximum height from floor	1900 mm
Frame material	Mild steel with powder coating or paint (Black Color)
Platform material	25 mm thick MDF with lamination
Power strip board	16 power points (230V / 5 A each) with individual switches to be provided at the bottom side of lower platform
Type of strip Board	Option 1. Regular Switch Board
Illumination	1200 mm long White LED tube light (minimum 22W) to be provided at the bottom side of lower platform

STANDING TYPE

Overhead Shelf

HOLMARC offers optical table shelves to meet your need for more organized and ergonomic lab space. Shelves are designed to be highest quality and sturdy to provide safe and reliable accessory options. Overhead shelves free standing type can be used for mounting vibration producing equipment above the optical breadboard. The height of shelf can be easily adjusted. Shelves can be positioned at any position along the rail.

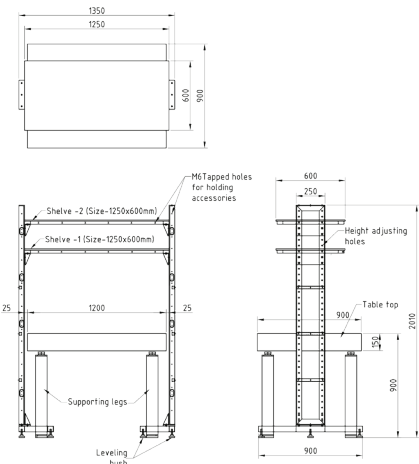
Standard unit consists of height adjustable 2 sets of overhead shelf and supporting structure. Height can

- Additional Shelf
- Bottom Shelf
- Storage Systems
- Power Strips
- Monitor Mounting Arm
- Cable Routing Clips
- LED Lights
- L-Clamp

Maximized table space,
ergonomics and utility
Mechanical isolation for the
equipment
Convenient location of
instruments
Height adjustable design for
overhead shelves
Leveling feet for uneven

floors
Steel welded design, black
powder coat finished
Custom shelving units(Op-
tional)
Electrical outlets (230V /
50Hz) on each side of the
shelf

be adjusted in 50mm increments using M10 screws. Structures are based on steel welded design with black powder coat finish. Platform material is multiwood (extruded 'U' Pvc polyester resin). M6 Mounting holes provided across the shelves and supporting structure for mounting accessories like additional shelves, bottom shelf computer stand, power strip, tool organiser etc. Electrical wires from the instruments can be organized by cable strips (sold separately). For lighting needs LED tube lighting and spots lights are available.



Specifications

Overhead Shelf - Standing Type

Structural material	Steel welded design
Finish	Black powder coat
Platform material	Multiwood
Platform adjustable height increments	50 mm
Maximum platform height mm
Minimum gap between two platform mm

Model No	
OHS-1200	1200 mm
OHS-1500	1500 mm
OHS-1800	1800 mm
OHS-2400	2400 mm
OHS-3000	3000 mm

OPTIONAL ACCESSORIES

Additional Shelves

It consists of platform, mounting bracket and suitable mounting screws. Construction based on steel welded design with black powder coat finished. Platform is made of multiwood (extruded 'U' Pvc polyester resin). M6 Mounting holes provided across the shelves for mounting accessories like , power strips, LED Lights, storage box etc.

Model No	Suitable over head shelves
AR-OHS-1200	OHS-1200
AR-OHS-1500	OHS-1500
AR-OHS-1800	OHS-1800
AR-OHS-2400	OHS-2400
AR-OHS-3000	OHS-3000

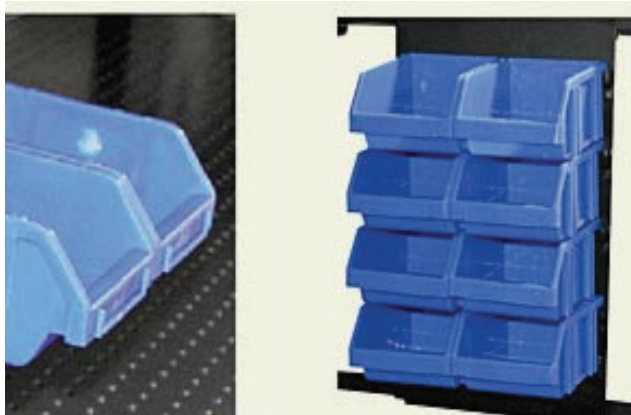
Bottom Shelves

It consists of platform and mounting bracket and suitable mounting screws. Construction based on steel welded design with black powder coat finished. Platform is made of multiwood (extruded 'U' Pvc polyester resin). It saves space when installing a laser and other equipment beneath optical tabletops. Laser Ports in a Tabletop are used to let a laser beam or cables through.

Model No	Suitable over head shelves
BR-OHS-1200	OHS-1200
BR-OHS-1500	OHS-1500
BR-OHS-1800	OHS-1800
BR-OHS-2400	OHS-2400
BR-OHS-3000	OHS-3000



Storage Systems



a. Storage box unit with 8 storage boxes

This unit can be mount on the side structure, 8 storage (2 x 4) boxes can be fix in this unit to store screws and other small things. Quick access box organizer is mounted infront of rack shelves.

Model No	No: of storage box in mounting board
OHS-SBU-08	8

b. Quick access Storage box

Model No	No: of storage box in mounting board
OHS-SBU-1	1
OHS-SBU-2	2
OHS-SBU-3	3

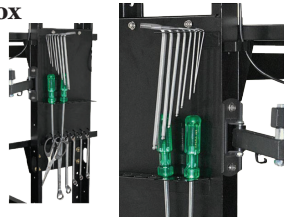
Quick access box organizer is mounted infront of rack shelves for convenient accessing of mostly used components.

d. Quick access Storage box

Model No	No: of storage box in mounting board
OHS-PEG-QA-1	For allen keys
OHS-PEG-QA-2	For Screw drivers
OHS-PEG-QA-3	10 hooks for hanging tools

This type of tool organizer is mounted infront of rack shelves for quick accessing the mostly required tools. It provide easy access and organization for the tools. These are small type of holders allows only one or two types of tool set.

c. Quick access Storage box



Tool Organizer - Pegboard is a regularly spaced hooks of metal black board designed for the storage of various tools, Including allen keys, screw drivers, spanners. It offers maximum toolboard storage versatility having 250 x 400mm of pegboard storage space.

Pegboard can be mount on the side wall of the shelves supporting structure .

Model No
OHS-PEG-10

Electrical Power Strips

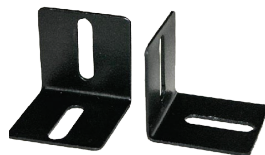


Suitable clamps are provided for each power strips for fixing directly to the to shelves by using M6 screw. Power strips can be mounted on the bottom, back and front side or vertically on the structure. Electrical lines can be easily routed by using cable routing clips (Please see the model OHS-CRL-25 cable routing clip).

All models consist of one power strip, six meter cable and three pin power plug.

Model No	Power strip Type
OHS-PS-1	Single power socket with switch
OHS-PS-5	Five power socket with switch
OHS-PS-10	Ten power socket with switch
OHS-PS-16	Sixteen power socket with switch

L-Clamp

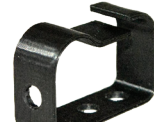


L Clamps are used to fix LED light or electrical power strips in any position on overhead shelves. Two M6 slots and four M3 tapped holes are provided on the L- clamp for mounting needs.

Model No	L-Clamp - 10Nos.
OHS-LC-25	

Cable Routing clips - Cable Holder

These small clips are side load type, Ideal for keeping wires out of sight and away from possible damage. It is designed to be installed on a shelf panel edge. It can hold a single cord or cable firmly in any desired route. The extra-wide opening allow easy insertion and removal of cables.



Cable routing clip have M6 screw holes for fixing any direction on the platform or on the vertical structure.

Model No	Cable routing clip (20 Nos.)
OHS-CRL-25	

Monitor Mounting Arm

Single monitor mounting arm adjusts effortlessly for easy use. Arm extends and retracts, tilt to change reading angles. Built to hold monitors up to 10 Kg. M6 Mounting holes pitch 100 mm provided on the vertical structure for fixing universal monitor mounting arm .



Model No
OHS-MSA-1

LED Lightings

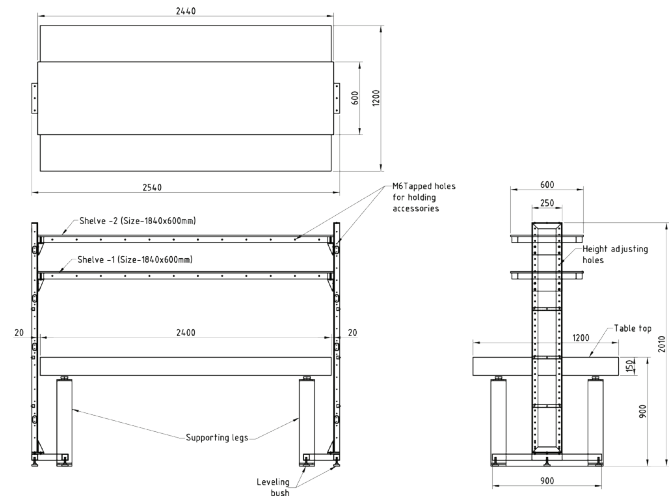
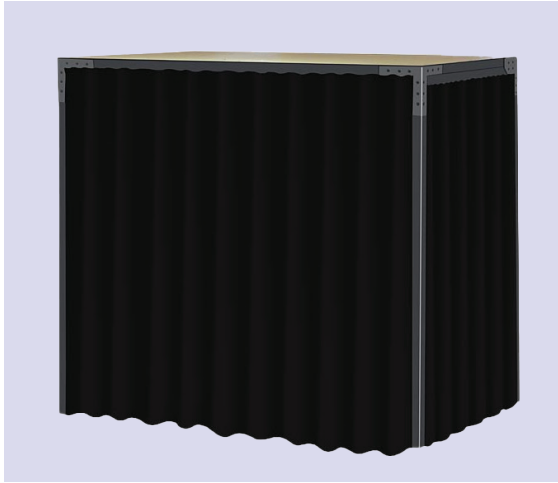


HOLMARC offers two options for under shelves lab lighting, LED strips light and LED Spot lighting. LED power cables can be easily routed by using cable routing clips. LED Light strips and spot lightings are mounted underside of the overhead shelf. It is ideal for lighting the entire work surface, LED light strips are attaches via L-Clamps.

All models consists of two meter cable with two pin and L-Clamp for mounting.

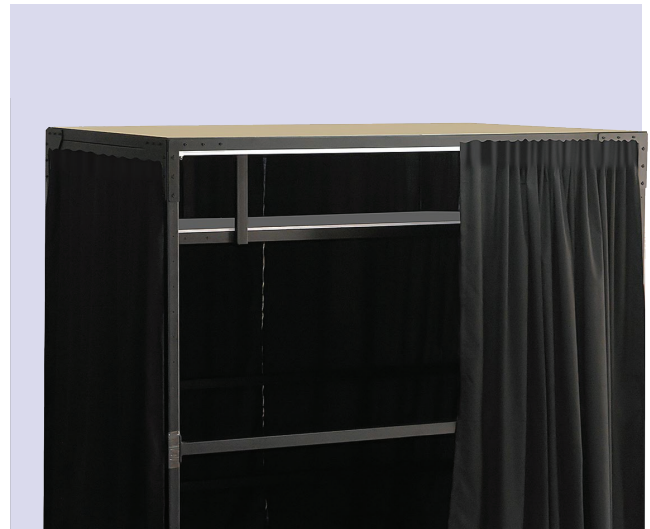
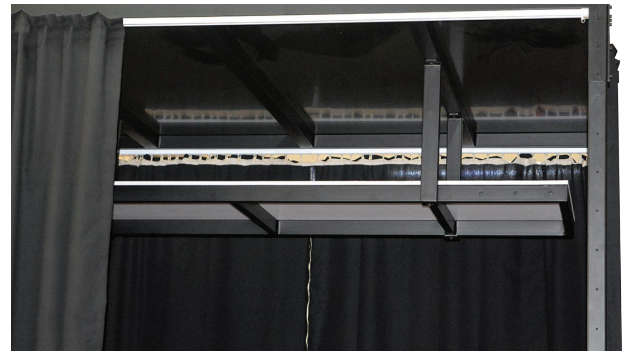
Model No	
OHS-LED-1	1 Feet LED Tube
OHS-LED-2	2 Feet LED Tube
OHS-LED-4	4 Feet LEDd Tube
OHS-LED-SP-1	Flexible arm LED Spot Light

Overhead Shelf with Curtain



Specifications

Structural material	Steel welded design
Finish	Black painted finish
Top cover	Multiwood
Platform height from breadboard	Platform height from breadboard
Curtain material	Black cloth / Transparent curtain
Compatible accessories	Electrical power strip, Monitor mounting arm, LED light, Fan with Heppa filter





Freestanding frame with black curtain

Model No	A	B
FSF-90-90-B	90	90
FSF-120-90-B	120	90
FSF-120-120-B	120	120
FSF-180-120-B	180	120
FSF-240-120-B	240	120
FSF-300-120-B	300	120
FSF-180-150-B	180	150
FSF-240-150-B	240	150
FSF-300-150-B	300	150
FSF-360-150-B	360	150

Freestanding frame with black curtain and internal shelf

Model No	A	B
OHS-90-90-B	90	90
OHS-120-90-B	120	90
OHS-120-120-B	120	120
OHS-180-120-B	180	120
OHS-240-120-B	240	120
OHS-300-120-B	300	120
OHS-180-150-B	180	150
OHS-240-150-B	240	150
OHS-300-150-B	300	150
OHS-360-150-B	360	150

Freestanding frame with transparent curtain

Model No	A	B
FSF-90-90-T	90	90
FSF-120-90-T	120	90
FSF-120-120-T	120	120
FSF-180-120-T	180	120
FSF-240-120-T	240	120
FSF-300-120-T	300	120
FSF-180-150-T	180	150
FSF-240-150-T	240	150
FSF-300-150-T	300	150
FSF-300-150-T	360	150

Freestanding frame with transparent curtain and internal shelf

Model No	A	B
OHS-90-90-T	90	90
OHS-120-90-T	120	90
OHS-120-120-T	120	120
OHS-180-120-T	180	120
OHS-240-120-T	240	120
OHS-300-120-T	300	120
OHS-180-150-T	180	150
OHS-240-150-T	240	150
OHS-300-150-T	300	150
OHS-360-150-T	360	150

Wooden Drawer Shelf

BDS SERIES



Specifications

Drawer

Type of Drawer	Designed for maximum utilization of the space under the table
No of Drawers	9 Nos arranged in 3 rows and 3 columns
Material of Construction	High quality MDF

Wooden Drawer Shelf - MET-DS Series

Model No	No of Drawers in one column	No of column	Total No of drawers	Inside dimensions of each drawer (Length x Width x Depth)	Overall dimensions (Width x Height x Depth)	Suitable breadboard support models
BDS-400-A	4	1	4	530 x 300 x 110	400 x 700 x 600	90 x 90 mm & above
BDS-400-B	3	1	3	530 x 300 x 130	400 x 650 x 600	90 x 90 mm & above
BDS-600-D	4	1	4	530 x 500 x 110	600 x 700 x 600	120 x 90 mm & above
BDS-600-E	3	1	3	530 x 500 x 130	600 x 650 x 600	120 x 90 mm & above
BDS-400-2A	4	2	8	530 x 300 x 110	800 x 700 x 600	150 x 90 mm & above
BDS-400-2B	3	2	6	530 x 300 x 130	800 x 650 x 600	150 x 90 mm & above
BDS-400-3B	3	3	9	530 x 300 x 130	1200 x 650 x 600	180 x 90 mm & above
BDS-600-2D	4	2	8	530 x 500 x 110	1200 x 700 x 600	180 x 90 mm & above
BDS-600-2E	3	2	6	530 x 500 x 130	1200 x 650 x 600	180 x 90 mm & above
BDS-600-EE	3	2	6	530 x 500 x 130	600 x 650 x 600	250 x 120mm & above

Metal Drawer Shelf - MET-DS Series

MET-DS-400-A	4	1	4	530 x 300 x 110	400 x 700 x 600	90 x 90mm & above
MET-DS-400-B	3	1	3	530 x 300 x 130	400 x 650 x 600	90 x 90mm & above
MET-DS-600-D	4	1	4	530 x 500 x 110	600 x 700 x 600	120 x 90mm & above
MET-DS-600-E	3	1	3	530 x 500 x 130	600 x 650 x 60	120 x 90mm & above
MET-DS-400-2A	4	2	8	530 x 300 x 110	800 x 700 x 600	150 x 90mm & above
MET-DS-400-3A	4	3	12	530 x 300 x 110	1200 x 700 x 600	180 x 90mm & above
MET-DS-400-2B	3	2	6	530 x 300 x 130	800 x 650 x 600	150 x 90mm & above
MET-DS-400-3B	3	3	9	530 x 300 x 130	1200 x 650 x 600	180 x 90mm & above
MET-DS-600-2D	4	2	8	530 x 500 x 110	1200 x 700 x 600	180 x 90mm & above
MET-DS-600-2E	3	2	6	530 x 500 x 130	1200 x 650 x 600	180 x 90mm & above
MET-DS-600-EE	3	2	2	530 x 500 x 130	600 x 650 x 60	250 x 120mm & above

2 nos of independent drawer shelves

19" Rack Shelf

19-IN-RS SERIES



Model No:	Rack Height	No of column	Overall dimensions (Width x Height x Depth)
19-IN-RS-12U-A	12 U	1	500 x 700 x 600
19-IN-RS-14U-B	14 U	1	500 x 650 x 600
19-IN-RS-12U-D	12 U	2	1000 x 700 x 600
19-IN-RS-14U-E	14 U	2	1000 x 650 x 600

Accessories for 19" Rack Shelf	Model No:	Height
2U Drawer Shelf	2U-DS-A	2U
3U Drawer Shelf	2U-DS-B	3U
4U Drawer Shelf	2U-DS-C	4U
Cantilever Rack Shelf	2U-DS-D	2U
Cantilever Rack Shelf with Optical Breadboard	2U-DS-DD-E	2U

Enclosures



Faraday Cage

Holmarc's benchtop faraday cage incorporates detachable aluminium frame and copper mesh to shield electromagnetic interference. Magnetic closures and large access doors or detachable front panel used in our models provide much convenient access.

These are compatible with all HOLMARC make standard breadboards / tabletops and fits directly without modifications / changes.

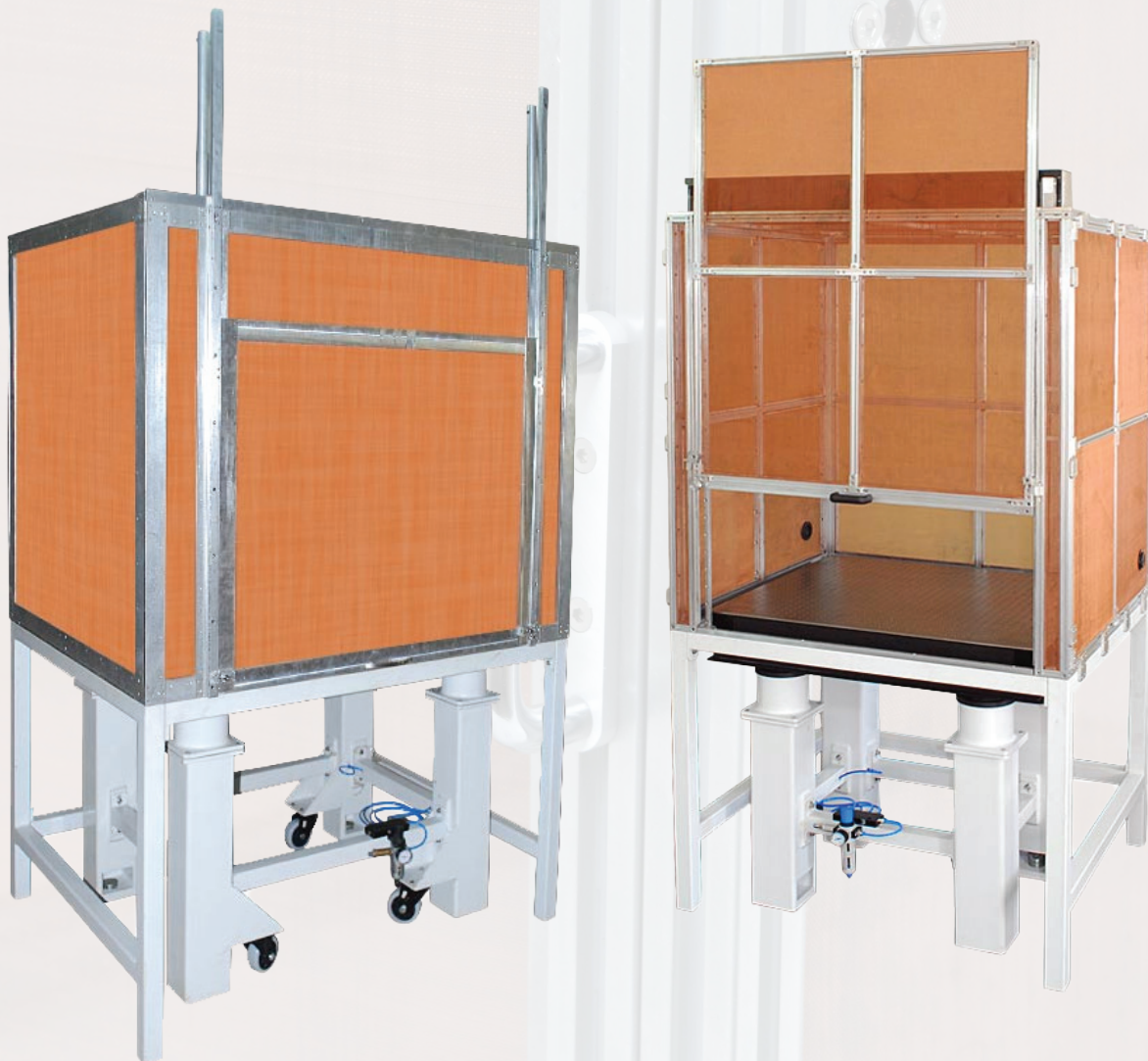


Copper mesh with aluminum frame
Protection from static and non-static electric fields

Wooden Drawer Shelf - MET-DS Series

Frame material	Aluminium
Mesh material	Copper
Copper mesh visibility	30 %
Copper mesh wire dia.	0.254 mm
Side panel fixing method	Screwable side panel
Number of cable ports with endcaps	2 Nos.
Door	Front door or screwable panel

Model No	Size	About
FRC-60-60-HD	600 x 600 x 600	Enclosure with hinged front door & detachable side panels
FRC-60-60-DT		Enclosure with detachable panels on all sides
FRC-90-60-HD	900 x 600 x 750	Enclosure with hinged front door & detachable side panels (900 mm side)
FRC-90-60-DT		Enclosure with detachable panels on all sides
FRC-90-90-HD	900 x 900 x 900	Enclosure with hinged front door & detachable side panels
FRC-90-90-DT		Enclosure with detachable panels on all sides
FRC-120-90-HD	1200 x 900 x 900	Enclosure with hinged front door & detachable side panels (900 mm door width on 1200 mm side)
FRC-120-90-DT		Enclosure with detachable panels on all sides
FRC-120-120-HD	1200 x 1200 x 900	Enclosure with hinged front door & detachable side panels (900 mm door width on 1200 mm side)
FRC-120-120-DT		Enclosure with detachable panels on all sides
FRC-180-120-HD	1800 x 1200 x 900	Enclosure with hinged front door & detachable side panels (900 mm door width on 1200 mm side)
FRC-180-120-DT		Enclosure with detachable panels on all sides
FRC-A-B-C-SLD	A x B x C ***	Enclosure with hinged front door & detachable side panels (900 mm max. door width on larger side)
FRC-A-B-C-HD		Enclosure with detachable panels on all sides



Metallic Enclosures

Holmarc's Metallic Enclosure consists of aluminium panels and aluminium extrusion frame with black powder coating. There are two options for front door – hinged or sliding. Two cable ports with endcaps are provided on the back side of the enclosure. Power outputs and roof LED light with on / off switches can be integrated with the enclosure, if specified at the time of ordering.

LED cabin lighting

Options for front door : hinged / sliding



Specifications

Frame material	Aluminium
Panels	2 mm thick aluminium
Visibility	0 %
Side panel fixing method	Tightened by rubber beading inside frame slots
Number of cable ports with endcaps	2 Nos.
Front door	Hinged or sliding
Finish	Black powder coated

Model No	Size (L x B x H) mm	Type
MTE-60-60-HD	600 x 600 x 600	Enclosure with hinged front door
MTE-60-60-SLD	600 x 600 x 600	Enclosure with sliding front door
MTE-90-60-HD	900 x 600 x 750	Enclosure with hinged front door (longer side)
MTE-90-60-SLD	900 x 600 x 750	Enclosure with sliding front door (longer side)
MTE-90-90-HD	900 x 900 x 900	Enclosure with hinged front door
MTE-90-90-SLD	900 x 900 x 900	Enclosure with sliding front door
MTE-120-90-HD	1200 x 900 x 900	Enclosure with hinged front door (longer side)
MTE-120-90-SLD	1200 x 900 x 900	Enclosure with sliding front door (longer side)

Accessories (LED Light and Power Socket)		
Model No	Type	
PS-15A-1	15A power socket with switch	1 No
PS-15A-2	15A power socket with switches	2 Nos
PS-15A-3	15A power socket with switches	3 Nos
LED-RF-1	Roof LED with Switch	1 No
LED-RF-2	Roof LED with Switches	2 Nos

Transparent Version of these Enclosures



Holmarc's Transparent Enclosure consists of acrylic panels and machined aluminium frame. Front door is available with two options : hinged door or sliding door. Enclosure frame has black powder coated finish. Back side of the enclosure has two cable ports with end caps. Mounting clamps are provided for fixing the enclosure with breadboard. Power outputs and roof LED light with on / off switches are integrated with enclosure, if specified with the model by the customer.

Specifications

Frame material	Aluminium
Panels	3 - 12 mm thick acrylic
Visibility	95 %
Side panel fixing method	Side panel fixing method
Number of cable ports with endcaps	2 Nos.
Front door	Hinged or sliding
Finish (frame)	Black powder coated

Model No	Size (L x B x H) mm	Type
TE-60-60-HD	600 x 600 x 600	Enclosure with hinged front door
TE-60-60-SLD	600 x 600 x 600	Enclosure with sliding front door
TE-90-60-HD	900 x 600 x 750	Enclosure with hinged front door (longer side)
TE-90-60-SLD	900 x 600 x 750	Enclosure with sliding front door (longer side)
TE-90-90-HD	900 x 900 x 900	Enclosure with hinged front door
TE-90-90-SLD	900 x 900 x 900	Enclosure with sliding front door
TE-120-90-HD	1200 x 900 x 900	Enclosure with hinged front door (longer side)
TE-120-90-SLD	1200 x 900 x 900	Enclosure with sliding front door (longer side)
TE-120-120-HD	1200 x 1200 x 900	Enclosure with hinged front door
TE-120-120-SLD	1200 x 1200 x 900	Enclosure with sliding front door
TE-180-120-HD	1800 x 1200 x 900	Enclosure with hinged front door (longer side)
TE-180-120-SLD	1800 x 1200 x 900	Enclosure with sliding front door (longer side)
TE-A-B-C-HD	A x B x C ***	Enclosure with hinged front door (longer side)
TE-A-B-C-SLD	A x B x C ***	Enclosure with sliding front door (longer side)
Accessories (LED Light and Power Socket)		
Model No	Type	
PS-15A-1	15A power socket with switch	1 No
PS-15A-2	15A power socket with switches	2 Nos
PS-15A-3	15A power socket with switches	3 Nos
LED-RF-1	Roof LED with Switch	1 No
LED-RF-2	Roof LED with Switches	2 Nos

Small Size Transparent Enclosures & Black Enclosures

Holmarc's Small Size Enclosures consists of acrylic panels (Transparent or Black) and extruded aluminium frame. Front door is available with two options : hinged and sliding door. Enclosure frame is black powder coated. Two cable ports with end caps are provided on the back side of the enclosure. Mounting clamps are provided for fixing the enclosure with breadboard.

**Acrylic panels
with aluminum
frame**

**Transparent
panels**



Specifications

Frame material	Aluminium
Panels	2 - 3 mm thick transparent acrylic
Side panel fixing method	Tightened by rubber beading inside frame slots
Number of cable ports with endcaps	2 Nos.
Front door	Hinged or sliding
Finish (frame)	Black powder coated

Model	Dimensions (mm)	Description
TSE-300-300-SLD	300 x 300 x 300	Enclosure with sliding front door
TSE-300-300-HD	300 x 300 x 300	Enclosure with hinged front door
TSE-600-300-SLD	600 x 300 x 300	Enclosure with hinged front door (600 mm side)
TSE-600-300-HD	600 x 300 x 300	Enclosure with sliding front door (longer side)
TSE-600-600-SLD	600 x 600 x 300	Enclosure with sliding front door
TSE-600-600-HD	600 x 600 x 300	Enclosure with hinged front door
TSE-900-600-SLD	900 x 600 x 450	Enclosure with sliding front door (900 mm side)
TSE-900-600HD	900 x 600 x 450	Enclosure with hinged front door (900 mm side)
TSE-900-900-SLD	900 x 900 x 450	Enclosure with sliding front door
TSE-900-900-HD	900 x 900 x 450	Enclosure with hinged front door
TSE-A-B-C-SLD	A x B x C ***	Enclosure with sliding front door (longer side)
TSE-A-B-C-HD	A x B x C ***	Enclosure with hinged front door (longer side)

*** Order by specifying A, B & C (Example)

1. TSE-950-650-500-SLD Enclosure with sliding door (950 mm side)
2. TSE-850-450-300-HD Enclosure with hinged door (850 mm side)

Black Enclosures



**Acrylic panels with
aluminum frame**

Black panels

Specifications

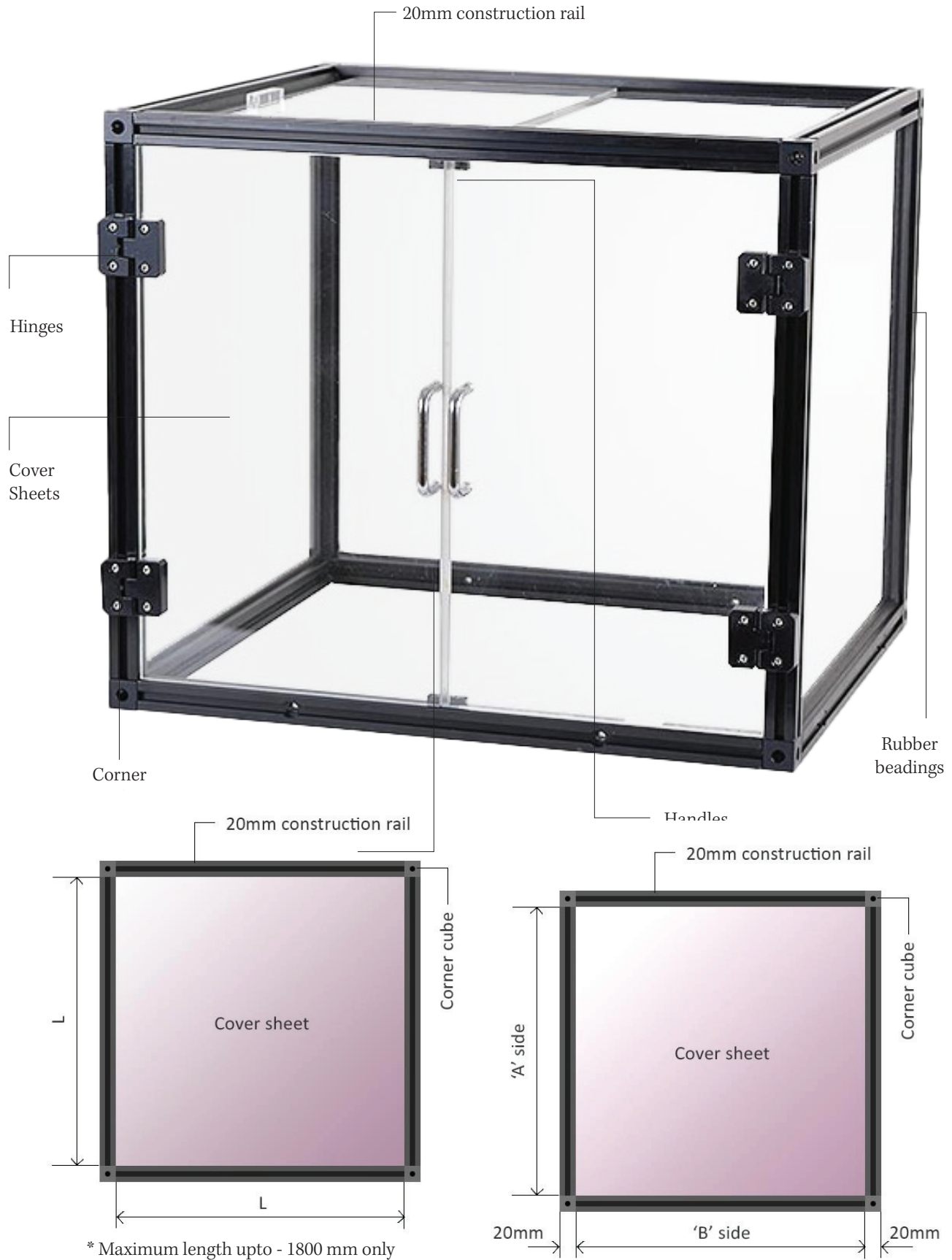
Frame material	Aluminium
Panels	2 - 3 mm thick black acrylic
Side panel fixing method	Tightened by rubber beading inside frame slots
Number of cable ports with endcaps	2 Nos.
Front door	Hinged or sliding
Finish (frame)	Black powder coated

BLE-300-300-SLD	300 x 300 x 300	Enclosure with sliding front door
BLE-300-300-HD	300 x 300 x 300	Enclosure with hinged front door
BLE-600-300-SLD	600 x 300 x 300	Enclosure with hinged front door (600 mm side)
BLE-600-300-HD	600 x 300 x 300	Enclosure with sliding front door (longer side)
BLE-600-600-SLD	600 x 600 x 300	Enclosure with sliding front door
BLE-600-600-HD	600 x 600 x 300	Enclosure with hinged front door
BLE-900-600-SLD	900 x 600 x 450	Enclosure with sliding front door (900 mm side)
BLE-900-600HD	900 x 600 x 450	Enclosure with hinged front door (900 mm side)
BLE-900-900-SLD	900 x 900 x 450	Enclosure with sliding front door
BLE-900-900-HD	900 x 900 x 450	Enclosure with hinged front door
BLE-A-B-C-SLD	A x B x C ***	Enclosure with sliding front door (longer side)
BLE-A-B-C-HD	A x B x C ***	Enclosure with hinged front door (longer side)

*** Order by specifying A, B & C (Example)

1. BLE-950-650-500-SLD Enclosure with sliding door (950 mm side)
2. BLE-850-450-300-HD Enclosure with hinged door (850 mm side)

Enclosure Construction System



1. 20 mm construction rail		
Model No	Length (mm)	Mounting
BX-20RL-210	210	M4 tapped holes on both ends
BX-20RL-260	260	
BX-20RL-310	310	
BX-20RL-360	360	
BX-20RL-410	410	
BX-20RL-460	460	
BX-20RL-510	510	
BX-20RL-560	560	
BX-20RL-710	710	
BX-20RL-860	860	
BX-20RL-960	960	
BX-20RL-1200	1200	
BX-20RL-XXX	Custom length *	
2. Corner Cube		
Model No	Length (mm)	Mounting
BX-20-CC	20 x 20 x 20	M4 CBR
3. Hinges		
Model No		
BX-20-HG		
Magnetic latch with holder		
BX-20-MGH		
5. Handles		
Model No	Type	
BX-20-SSU	Stainless steel U shaped handle along with mounting plate screws and T nut	
BX-20-PH4	Plastic handle (4 inch) with insert screws and T nut	
6. Cover Sheets		
Model No	L x W (mm)	Type
BX-20-3TAS-A-B	A x B	3 mm thick transparent acrylic sheet (custom size *)
BX-20-3BAS-A-B	A x B	3 mm thick black acrylic sheet (custom size *)
Method to specify A and B		
'A' side rail length + 10 mm		
'B' side rail length + 10 mm		
Eg:		
'A' side rail length = 360 mm, then L = 370 mm		
'B' side rail length = 510 mm, then W = 520 mm		
7. Rubber beading - Rubber beading is used for tightening the panels inside aluminium frame.		
Model No	Size	
BX-20-RB	5 meters	
8. Clamps		
Model No	Type	
BX-20-TB	Table clamp for fixing to breadboard	
9. T-nut and Screws		
Model No	Type	Qty
BX-20-TN	T - nut	50 per pack
BX-20-M4-10	M4 x 10 screw	50 per pack
BX-20-M3-10	M3 x 10 screw	50 per pack
Allen key	Allen key set	1 set
Spring washer	Spring washer	50 per pack

Acoustic Enclosure

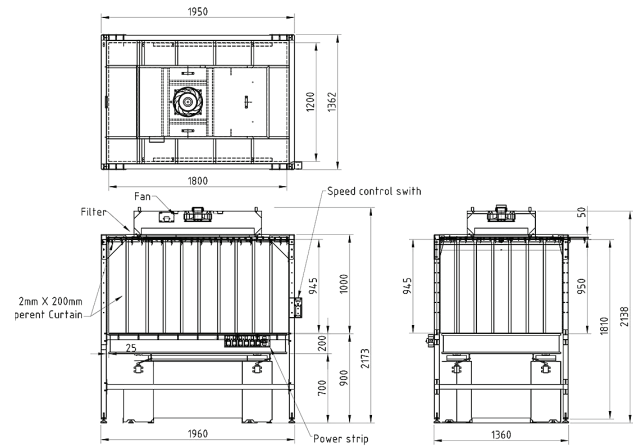


Specifications

Body	MS painted
Inner side walls	Acoustic Insulation Foam Kit
Close Cell	XLPE x 25 mm thick with Scrim Alu. Foil Facing
Enclosure size	2.11 ft x 2.11 ft x 2.6 ft
Main door	Hinged push up main door with a small access door
Foam Specs	Close Cell XLPE, 26 kg/m ³ density, Grey Fire-resistant 'BS476 Class-0' flammability

Vertical Laminar Flow with Optical Table and Side Curtains

The vertical laminar flow work table with an optical table and side curtains is designed to meet the specific needs of optical experiments and sensitive research applications. Featuring a vertical laminar airflow pattern, this table directs clean air downward, creating a clean zone around the work area. The inclusion of an optical table provides a stable platform for optical setups and experiments, ensuring precise alignment and accurate measurements. Additionally, side curtains enhance containment, minimizing the risk of external contamination and maintaining a controlled environment for delicate procedures. This configuration is well-suited for optical microscopy, spectroscopy, and other experiments requiring a clean and stable workspace.



Freestanding frame with Black curtain

Model No	Length	Width
LMHV-90-90-B	90	90
LMHV-120-90-B	120	90
LMHV-120-120-B	120	120
LMHV-180-120-B	180	120
LMHV-240-120-B	240	120
LMHV-300-120-B	300	120
LMHV-180-150-B	180	150
LMHV-240-150-B	240	150
LMHV-300-150-B	300	150
LMHV-360-150-B	360	150

LMHV-90-90-T	90	90
LMHV-120-90-T	120	90
LMHV-120-120-T	120	120
LMHV-180-120-T	180	120
LMHV-240-120-T	240	120
LMHV-300-120-T	300	120
LMHV-180-150-T	180	150
LMHV-240-150-T	240	150
LMHV-300-150-T	300	150
LMHV-360-150-T	360	150

Laminar Flow Work Table

LMHH-TT Series

Laminar flow work tables are essential tools in various industries, particularly in fields where a clean and controlled environment is crucial for sensitive processes such as research, manufacturing, and experimentation. These

tables provide a controlled airflow environment that minimizes particle contamination, ensuring optimal conditions for precision work, delicate experiments, and manufacturing processes. Among the range of laminar flow work tables

developed by our company, we offer three distinct types, each tailored to specific applications:

1. Horizontal Flow Work Table with Optical Breadboard

This type of laminar flow work table combines the benefits of laminar airflow with the stability and versatility of an optical breadboard. The horizontal flow design ensures a uniform airflow across the work surface, minimizing the risk of particle contamination. The inclusion of an optical breadboard expands the utility of the table, allowing users to mount and align optical components with precision. This makes it particularly suitable for applications such as optical experiments, laser systems development, and photonics research where stability and cleanliness are paramount.

2. Horizontal Laminar Flow Unit

Our horizontal laminar flow unit offers a clean and controlled environment for a wide range of applications. With a horizontal airflow pattern, this unit provides a laminar flow of air across the work surface, effectively removing contaminants and ensuring a particle-free environment. This type of laminar flow work table is ideal for tasks requiring a clean workspace, such as electronics assembly, medical device manufacturing, and pharmaceutical compounding. Its versatile design makes it adaptable to various work environments, providing a reliable solution for maintaining cleanliness and precision in diverse applications



Model No	Work table type	Mounting holes	Size of table
LMHH-TT 1200-600	Horizontal Flow Work Table with Optical Breadboard	M6 mounting holes on 25mm grid	1200 x 600 mm
LMHH 1200-600	Horizontal Laminar Flow Unit	Nil	1200 x 600 mm

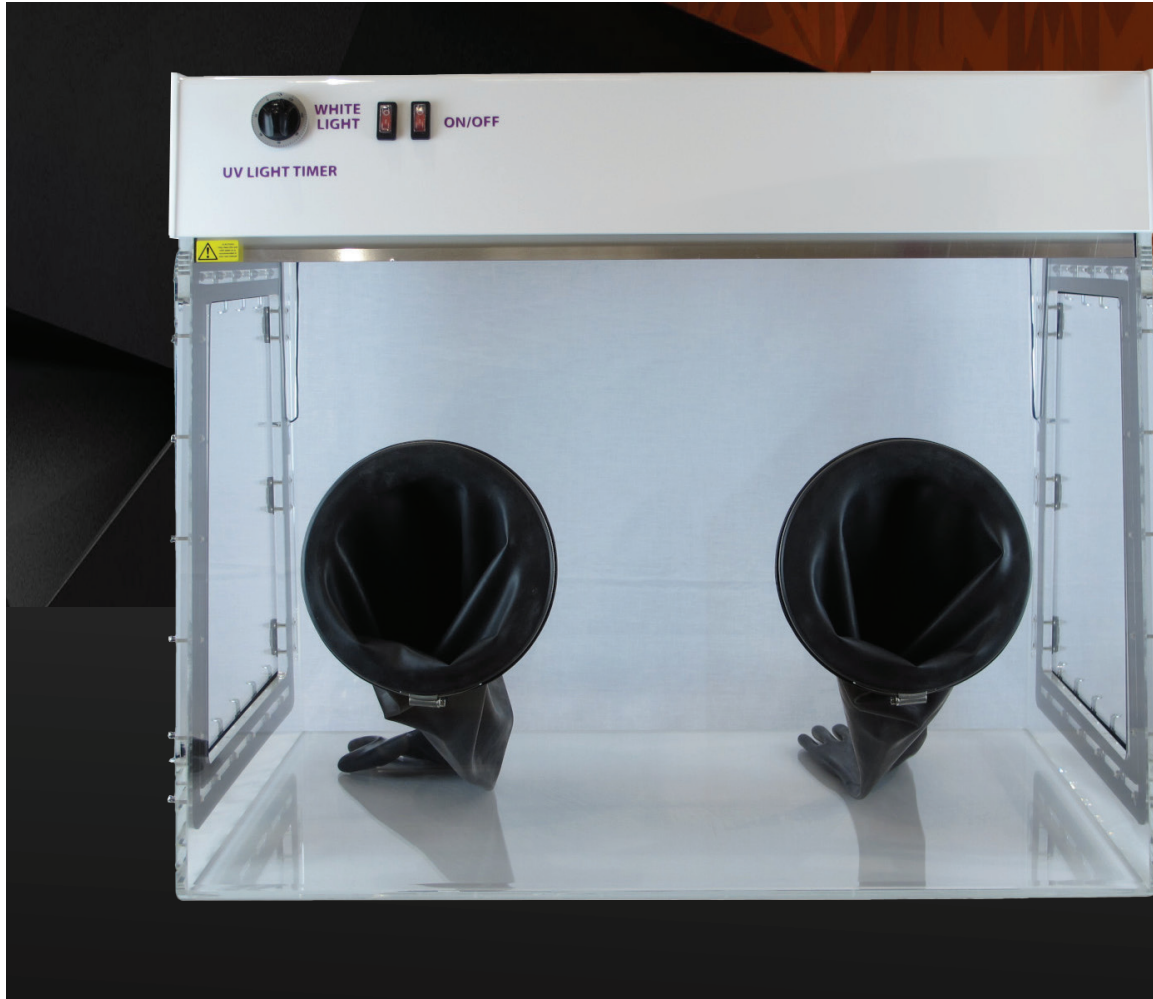
Glove Box

A glovebox (or glove box) is a sealed container that is designed to allow one to manipulate objects where a separate atmosphere is desired. Built into the sides of the glovebox are gloves arranged in such a way that the user can

place their hands into the gloves and perform tasks inside the box without breaking containment. Part or all of the box is usually transparent to allow the user to see what is being manipulated. Two types of gloveboxes exist.

The first allows a person to work with hazardous substances, such as radioactive materials or infectious disease agents, and the second allows manipulation of substances that must be contained within a very high purity

inert atmosphere, such as argon or nitrogen. It is also possible to use a glovebox for manipulation of items in a vacuum chamber



The Cleaver Scientific Combi Box combines the benefit of UV sterilisation with the fully sealed and enclosed area of a glove box. Four 15W UV-C bulbs may be timer controlled for up to 30 minutes, or indefinitely, to decontaminate equipment and the work surface before and after use.

A side panel with safety interlock switches immediately disconnects the UV source to facilitate easy placement and removal of samples and packages, while a 15W white light bulb illuminates the entire work surface to provide excellent visibility. Two hermetically sealed non-UV transparent gloves afford the user

total manoeuvrability and dexterity when handling equipment, samples and packages within the contained environment of the glove box, plus additional protection when working under the UV source.

The standard unit has a single side door on the left

of the box, for unit's with 2 doors, please enquire about pricing.

This unit has a 12 month limited warranty, for more information, consult our terms and conditions. Product Includes: Glove box with single side door, UV lights and gloves.

Optic Rails



Dovetail Triangular Optical Rail & Carrier



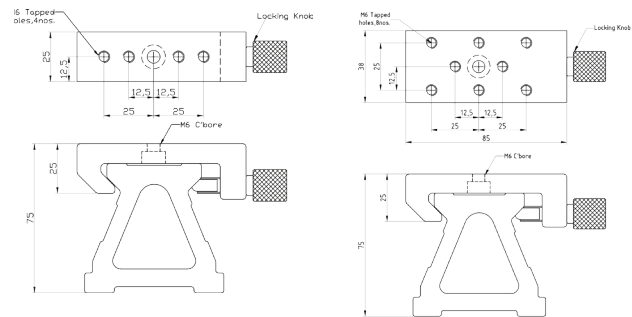
Specifications

Heavy duty

Aluminum material

Black anodized finish

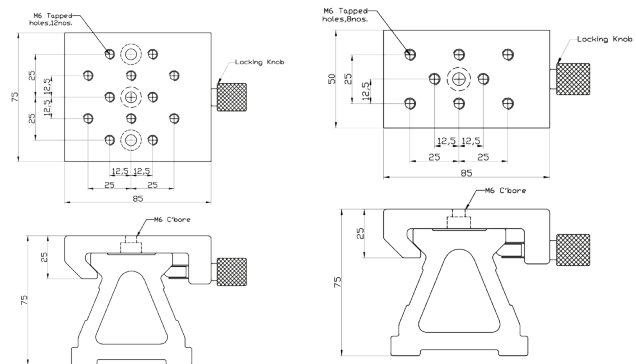
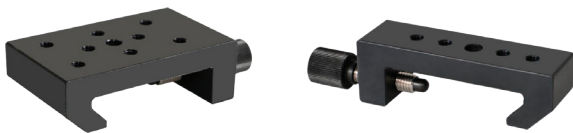
Quick changeable rail carriage



Optic Rails

Model No	Length (mm)
RL-HC4-500	500
RL-HC4-750	750
RL-HC4-1000	1000
RL-HC4-1250	1250
RL-HC4-1500	1500
RL-HC4-2000	2000

Carrier for Dovetail Triangular Optical Rail



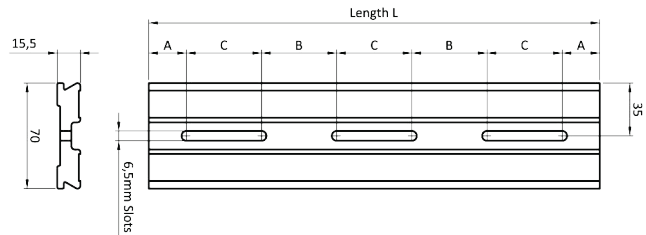
These carriers are compatible with our Dovetail Triangular Optical Rail. They are available in three different lengths ranging from 25 mm to 100 mm. The carriers can be locked anywhere on the rail. Both M6 and M4 tapped holes are provided on it for mounting components.

Model No	Length (mm)
RLC-HC4-25	25
RLC-HC4-38	38
RLC-HC4-50	50
RLC-HC4-75	75
RLC-HC4-100	100

Rail with Dovetail design & Carriers



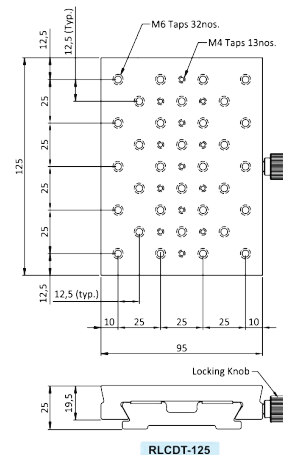
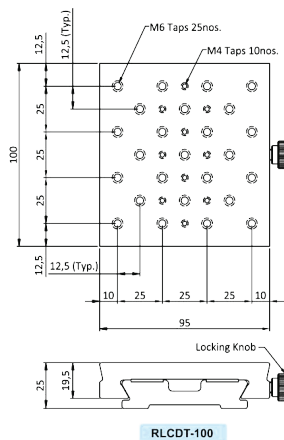
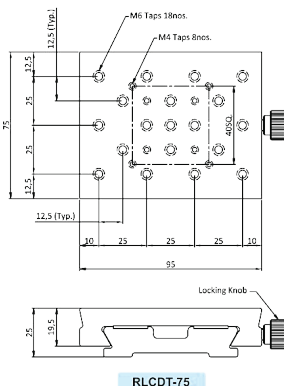
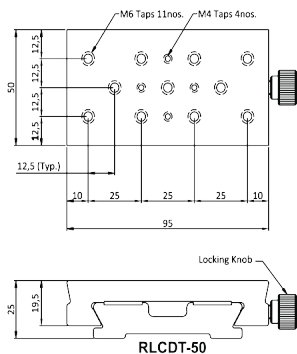
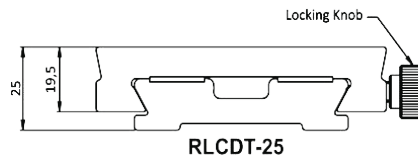
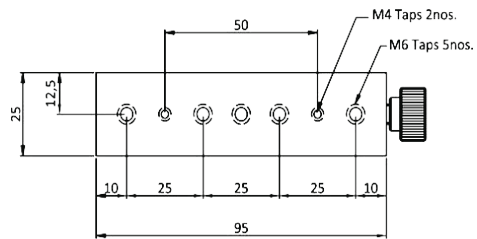
- 15.5 mm thick
- Aluminium alloy
- M6 C'bored slots



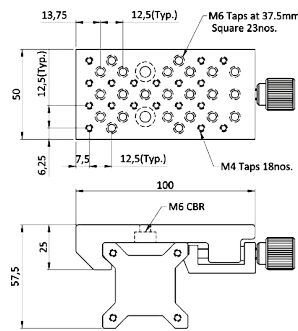
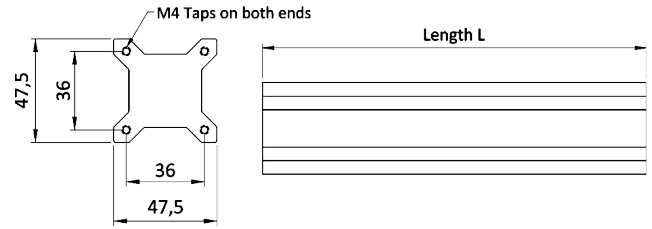
Model No	Length (mm)	A (mm)	B (mm)	C (mm)
RLDT-300	300	25	50	50
RLDT-350	350	25	75	50
RLDT-400	400	25	50	50
RLDT-450	450	12.5	75	50
RLDT-500	500	12.5	125	75
RLDT-550	550	37.5	125	75
RLDT-600	600	37.5	75	75
RLDT-650	650	25	100	75
RLDT-700	700	50	100	75
RLDT-750	750	37.5	125	75
RLDT-1000	1000	50	200	75

Carriers

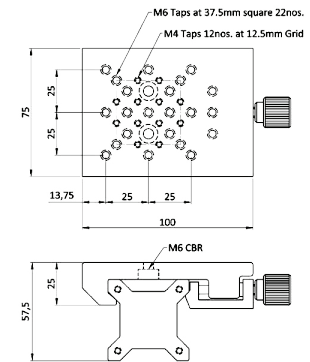
These carriers are compatible with our rails having dovetail design. They are available in standard width of 95mm and of various lengths ranging from 25 mm to 150 mm. The carriers can be locked anywhere on the rail. Both M6 and M4 tapped holes are provided on it for mounting components



HC - 2 Rail & Carriers



MODEL RLC-HC2-50

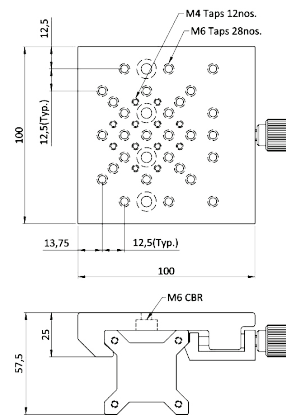


MODEL RLC-HC2-75

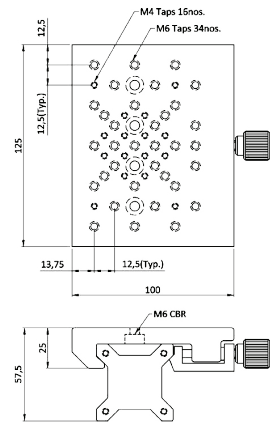
HC-2 Rail

Model No	Length (mm)
RL-HC2-250	250
RL-HC2-500	500
RL-HC2-750	750
RL-HC2-1000	1000
RL-HC2-1250	1250
RL-HC2-1500	1500
RL-HC2-2000	2000

Note : Rails exceeding 2 m are available on request



MODEL RLC-HC2-100



MODEL RLC-HC2-125

Carrier for HC - 2 Rails

These carriers are compatible with our HC-2 rails. They are available in standard width of 100mm and of various lengths ranging from 50 mm to 150 mm. The carriers can be locked anywhere on the rail. Both M6 and M4 tapped holes are provided on it for mounting components.

Model No	Length (mm)
RLC-HC2-25	25
RLC-HC2-50	50
RLC-HC2-75	75
RLC-HC2-100	100
RLC-HC2-125	125
RLC-HC2-150	150

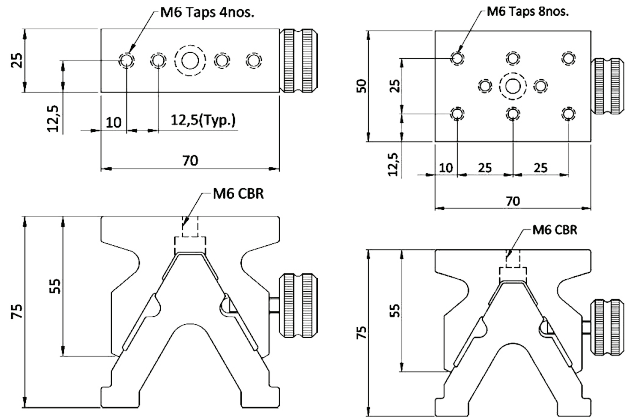
length from knob center to edge



HC - 3 Rail & Carriers

Carrier for HC - 3 Rails

These carriers are compatible with our HC-3 rails. They are available in three different lengths ranging from 25 mm to 75 mm. The carriers can be locked anywhere on the rail. Both M6 and M4 tapped holes are provided on it for mounting components.



MODEL RLC-HC3-25

MODEL RLC-HC3-50

Model No	Length (mm)
RLC-HC3-25	25
RLC-HC3-50	50
RLC-HC3-75	75

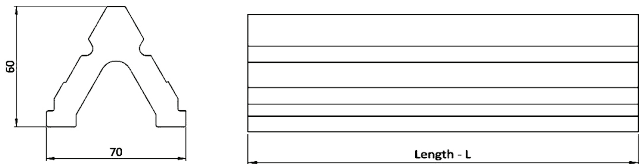
length from knob center to edge

HC-3 Rail

HC-3 rails are triangular shaped aluminium extrusions. They are available in various lengths ranging from 0.5 to 2m. They are rigid in structure and are light weight. Linear scale with 1mm graduation are provided on the side for quick position reference.



Aluminium extrusions
Ground finish



Model No	Length (mm)
RL-HC3-500	500
RL-HC3-750	750
RL-HC3-1000	1000
RL-HC3-1250	1250
RL-HC3-1500	1500
RL-HC3-2000	2000

Accessories

Vertical mounting base :

Vertical Mounting Bases are required for stable mounting of the rails and other optical components to the breadboard or optical workstation. We supply bases compatible with our standard HC-1 and HC-2 rails for vertical mounting. They are available in different sizes as per the user requirement. They are given black anodised finish and are given necessary holes for mounting purposes



Model No	Compatible Rail	Base Plate Size
BP-RLC-HC2-75	HC-2	75 x 75 x 12
BP-RLC-HC2 -100	HC-2	100 x 100 x 12
BP-RLC-HC1 -100	HC-1	100 x 100 x 15
BP-RLC-HC1 -175	HC-1	165 x 165 x 15

Base with leveling screws

Bases are required for stable mounting of the rails and other optical components to the breadboard or optical workstation. We supply bases compatible with our standard HC-1, HC-2 and HC-3 rails. These bases are provided with leveling screws that enable users to level the rail as per requirement. They are given black anodised finish and are given necessary holes for mounting purposes.



Model No	Compatible Rail
BPL-RLC-HC3	HC-3
BPL-RLC-HC2	HC-2
BPL-RLC-HC1	HC-1

Lab Jacks



Manual Labjack

LJ SERIES

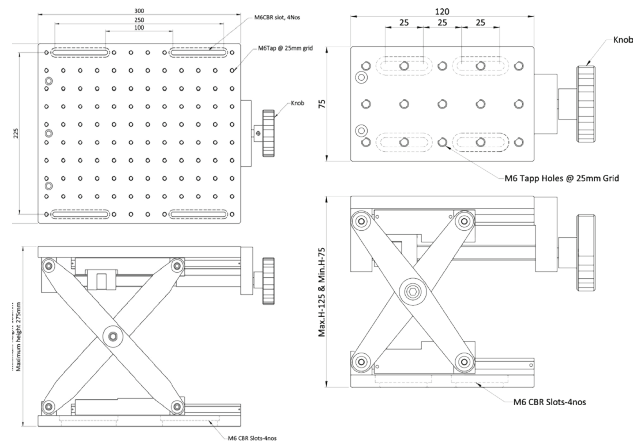
This is a labjack that offers excellent rigidity and positioning accuracy. These labjacks can be used to lift assemblies like Lasers, Stages etc. This model uses scissors type design.



Specifications

Vertical height adjustment by 1 mm pitch lead screw
Parallelism : 0.1mm for the entire travel
M6 tapped holes on the top at 25 mm grid.
M6 tapped holes on the top at 25 mm grid.
Aluminium alloy & stainless steel construction
Black anodized
Smooth and stable vertical adjustment
Scissors type design

Model No	L (mm)	B (mm)	H (min, max) (mm)	Load Capacity
LJ120 - 75	120	75	75, 125	5
LJ150 - 100	150	100	75, 150	10
LJ180 - 100	180	100	75, 150	15
LJSS250 - 150	250	150	100, 200	10
LJSS250 - 200	250	200	100, 200	10
LJSS250 - 250	250	200	100, 200	12
LJSS300 - 150	300	150	100, 270	25
LJSS300 - 250	300	250	100, 270	30
LJSS300 - 300	300	300	100, 270	30
LJSS300 - 350	350	300	100, 270	30



MODEL LJSS300-250

MODEL LJ120-75

Vacuum Compatible Labjack



**Smooth and stable
vertical adjustment**

Scissors type design

Vacuum compatible lab jacks are used in applications where the height adjustment is required inside vacuum environment. The gear ratio is made in 8:1 which ensures smooth movement. The gear materials are made in bronze which itself is lubricating and require very little grease. There is also an option to move the stage manually using a knob provided in the motor. High vacuum grade cables and motors are used in this series. We have also provided an option to adopt the vacuum series in manual lab jacks also. To select the required model, please add 'V' on the model while choosing. For eg: For opting vacuum compatibility in the manual model labjack : LJSS 300-150, the model number will be V-LJSS 300-150.

Motorized Labjack

MLJ SERIES



Labjacks combine precision height adjustment in a stable design with high load capacity. These Motorized Labjacks provide a rugged height adjustable platform ideal for mounting optomechanical sub assemblies requiring height adjustments. It can be controlled remotely by using a PC or a hand held unit.

The upper and lower mounting plates have M6 tapped holes and clearance slots respectively for general mounting requirements.

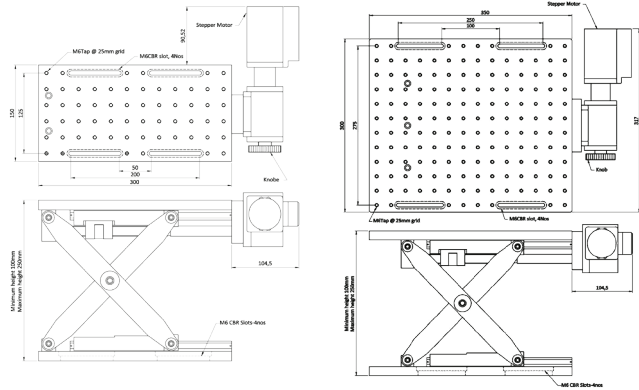
Specifications

- Load capacity : Up to 20 kg
- Vertical height adjustment by lead screw.
- Precision roller linear guide way
- Actuator : Geared stepper motor
- Actuator : Geared stepper motor
- Parallelism : 0.1mm for entire travel
- M6 tapped holes on the top at 25 mm grid.
- M6 clearance slots at the base
- Aluminium alloy
- Black Anodized

Model No	L (mm)	B (mm)	H (min, max) (mm)	Load Capacity
MLJ300 - 150	300	150	105, 270	20
MLJ300 - 250	300	250	105, 270	20
MLJ300 - 300	300	300	105, 270	20
MLJ350 - 250	350	250	105, 270	20
MLJ350 - 300	350	300	105, 270	20
MLJ350 - 350	350	350	105, 270	20

Vacuum Compatible Labjack

We have also provided an option to adopt the vacuum series in manual lab jacks also. To select the required model, please add 'V' on the model while choosing. For eg: For opting vacuum compatibility in the motorized model labjack : MLJ 300-150, the model number will be V-MLJ 300-150.



MODEL MLJ300 - 150

Excellent rigidity and positioning accuracy

Geared stepper motor driven Actuator

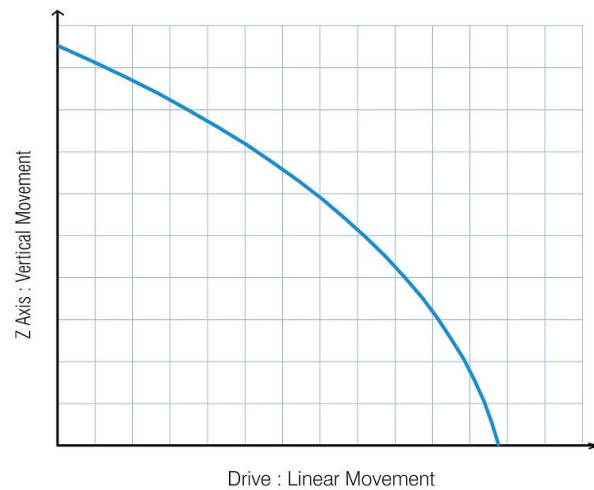
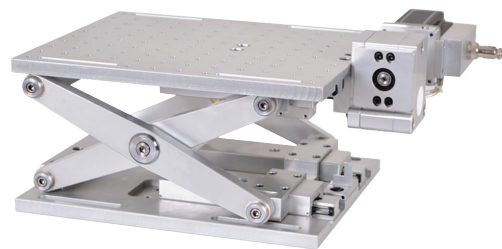


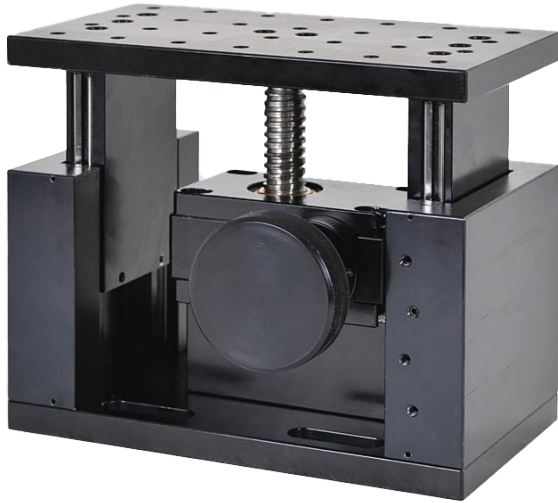
Fig. Motorized Lab Jack Movement Graph

MLJ Series lab jacks offer excellent rigidity and positioning accuracy with high load capacity. It can be used to lift larger assemblies like lasers, microscopes etc. This model uses scissors type design



Heavy Duty Labjack

HDLJ SERIES



A geared screw jack design help our jack lift weight up to 50 - 75kg, lifting platform size various fro 180 x 100 and 200 x 200mm and can raise up to 50 mm from its minimum height, precision roller slides are used to guide the heavy duty labjack in position.

Specifications

Vertical height adjustment by 4 mm pitch lead screw with Gear Box

Parallelism: 0.1 mm for entire travel

Load Capacity : 50 to 75 kg

Travel Range : 50 mm

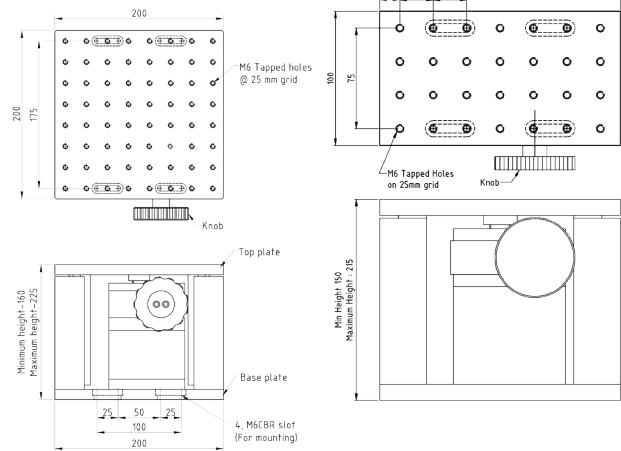
M6 tapped holes at the top at 25 mm grid

M6 clearance slots at bottom

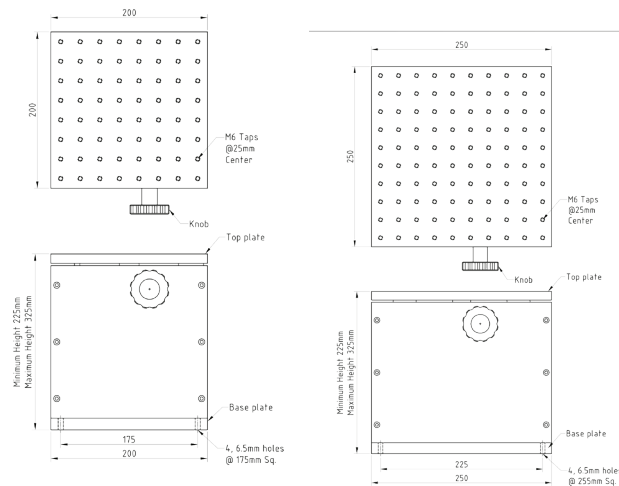
Aluminium alloy

Black anodized

Model No	L (mm)	B (mm)	H (min, max) (mm)	Travel (mm)	Load Capacity
HD LJ180-100	180	100	150, 215	65	65 Kg
HD LJ200-200	200	200	160, 225	65	75 Kg
HD LJ250-250	250	250	200, 250	50	75 Kg
HD LJ200-200-A	200	200	225, 325	100	50 Kg
HD LJ250-250-A	250	250	225, 325	100	50 Kg
HD LJ300-300-A	300	300	225, 325	100	75 Kg
HD LJ300-300-B	300	300	250, 375	125	75 Kg



MODEL HD LJ200-200



MODEL HD LJ200-200-A

MODEL HD LJ250-250-A

High load capacity up to 100 Kg

4 mm pitch lead screw drive

Vacuum Compatible Labjack

Vacuum compatibility in the Heavy duty Labjack : HDLJ 300-250, the model number will be V - HDLJ 300-250.

Motorized Vertical Translation Stages

MVTS SERIES

Holmarc's motorized actuator can be used to replace micrometers in translation stages or lead screws in kinematic mounts for making the positioning automated with appropriate control electronics. Drive is achieved by a stepper motor coupled to a precision lead screw-nut mechanism.

The spindle of the actuator which moves forward and backward when the motor rotates is made non-rotating to bring in extra precision. Construction material is stainless steel. Our standard position controllers can be used to drive these actuators without any customization. Holmarc can supply kinematic mounts and stages fitted with these actuators for custom applications. You are welcome to discuss your needs with our sales engineers.

Travel	10 - 50 mm
Absolute positioning accuracy	0.625 micron (1/16 microstep) *
Resolution	0.625 micron (1/16 microstep) *
Repeatability	5 micron *
Straight line accuracy	10 micron *
Parallelism	5 micron (total travel)
	Assembly
	Full travel
Maximum Speed	8 mm / sec *
Minimum continuous speed	12.5 micron / sec *
Feedback	Nil
Linear Guide way	Pre-loaded roller bearing
Material Construction	
	Main body
	Lead screw
	Nut
Load Capacity	10 - 15 kg
Motor	Stepper Motor
Lead screw	
	Lead screw pitch
	Lead screw type
Coupling	Directing coupling (coupling not included)
Bearings	SKF or Equivalent
Lubricants	Grease
Finish	Black Anodized
Mounting holes	
	Top Plate
	Bottom plate
Operating temperature	5 - 80 degree centigrade
Accessories	Nil
Electrical connector	9 pin brass connector
Limit switches	Optical limit switch
Controller	Single axis controller
Hand held controller	Optional handheld controller on request



0.5mm Pitch Lead Screw

Model No	L (mm)	B (mm)	H (min, max) (mm)	Travel (mm)	Load Capacity
MVTS-5065-10	65	50	75 - 85	10	2 Kg
MVTS-5065-25	65	50	90 - 115	25	2 Kg
MVTS-65-10	65	65	90 - 100	10	5 Kg
MVTS-65-25	65	65	100 - 12	25	5 Kg

1 mm Pitch Lead Screw

Model No	L (mm)	B (mm)	H (min, max) (mm)	Travel (mm)	Load Capacity
MVTS-75-10	75	75	75 - 85	10	5 Kg
MVTS-75-25	75	75	90 - 100	25	5 Kg
MVTS-90-10	90	90	90 - 100	10	5 Kg
MVTS-90-25	90	90	100 - 125	25	5 Kg

2 mm Pitch Lead Screw

Model No	L (mm)	B (mm)	H (min, max) (mm)	Travel (mm)	Load Capacity
MVTS-125-10	125	125	100 - 120	10	15 Kg
MVTS-125-25	125	125	125 - 150	25	15 Kg
MVTS-125-50	125	125	150 - 200	50	10 Kg
MVTS-125180-10	125	180	100 - 110	10	15 Kg
MVTS-125180-25	125	180	125 - 150	25	15 Kg
MVTS-125180-50	125	180	150 - 200	50	10 Kg
MVTS-200200-10	200	200	100 - 110	10	12 Kg
MVTS-200200-25	200	200	125 - 150	25	10 Kg
MVTS-200200-50	200	200	150 - 200	50	8 Kg

Controller for Motorized Lab jack

MODEL NO : HO-MPC-1H

This is a simple electronic device which provides up and down motion control to the motorized lab jacks. Holding down the up and down key will move the platform up or down correspondingly and releasing the key will stop the movement.

The speed can be varied using a control knob provided in the box. The LCD display provided in the control box will display the distance travelled. The Box will be separated from the Lab jack using a cable of length 3 meters. The power input can be 120V or 220V AC depending on requirement

Micro Motion

Model No:	Number of axis	Motor Type	Motor Torque (kg cm)	Control	Typical Pay load (kg)	Option
MPC-1-ST-OL	1	Stepper	1.5	Open Loop	20	None
MPC-2-SV-OL	2	Servo	7	Closed Loop	35	None
MPC-3-ST-OL	3	Stepper	10	Open Loop	50	None
MPC-4-SV-OL	4	Servo	15	Closed Loop	60	None
MPC-6-ST-OL	6	Stepper	31	Open Loop	80	None
MPC-4-ST-CL-H	4	Stepper	7	Closed Loop	35	Hand Held Unit



Software
(Micro-Motion)

Manual Mode/
Programmable mode

Handheld Motion
Control System

Multi Axis Positioning

Holmarc provides positioning controllers up to 6 axes for all motion applications, individually programmable for stepper motor driven stages. Multi axis position controller is recommended for a wide variety of both simple and complex motion applications.

Microstep Configuration	Micro steps per revolution
1 / 2	400
1 / 4	800
1 / 16	3200

Customized Motion Control and Data Acquisition Systems

Holmarc also provides custom motion controllers with graphics LCD and micro switch keyboard which facilitates stand alone operation with a wide range of functions, without interfacing to a PC. The user interface in these systems can be developed according to specific application. Hence, the user is freed from meddling with unwanted features. The short learning curve also allows the user to

dedicate more time on actual task. We will help you to develop a complete system for your motion control and data acquisition application using Holmarc's wide range of standard and custom products. Any third party instruments which have commonly used hardware or software interfaces like RS232, GPIB, DCOM etc can be use with the system.

Handheld Motion Control System

Hand-held stepper motor controller-driver offers up to 4 axes control for actuators, linear stages and rotation stages. The hand held unit features 16X micro stepping ratio for smooth, high resolution positioning. Two primary control modes are available, manual control and computer control. To drive the stage using a PC, a command set will be provided to communicate with the controller using LabVIEW or any other programming language through RS 232 port.



Holmark Manufactures Opto Mechanical Components and Breadboards

Post Mounting System - 8mm, 12mm, 12.7mm, 16mm



PH Series Post Holders



P Series Post



Pedestal Adapter



PF Series Pedestal Fork



Post Collar



Translating Post Holder

Post Bases, Clamps



Post Bases



Pedestal Bases



Switchable Magnetic Post Bases



Radial Slotted Base Plate



Swivel Post Base



Post Clamps



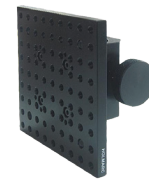
Slotted Plates



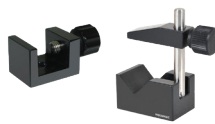
Pedestal Post Clamp/ Pillar Post Clamp



Large Post Clamp Plates



Heavy Duty Post Dual Rod System



C & V type clamps



Table Clamps



Thread Adapters



Thump Screws



SHC Screws



All in One Screw kit

Optics Mounts



Apertures



Fiber Positioners



Optical Chopper



Motorised Shutter



Lens Tube Assembly System



Beam Steering Device



Rod Assembly



Precision Tilting Platform



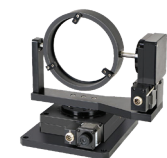
4 Axis Platform



Single Axis Tilting Platform



Gimbal Mirror Mounts



Motorized Gimbal Mirror Mounts



Kinematic
Platform Mount

Kinematic Prism
Mount

Tilt and Rotation
Stage

Rigid Camera Lens
Mounts

Self Centering Lens
Mounts

Circular Adjustable
Lens Mount



V Type Adjustable
Lens Mount

Kinematic
Cylindrical Lens
Mount

Rigid Camera
Lens Mounts

YZ Lens Mounts /
Objective
Lens Mounts

Focus Adjustable
Lens Mounts

Rigid Objective
Lens Mounts



XYZ Lens Mounts

Five Axis Lens
Mount

Kinematic Lens
Mounts

5 axis Objective
Mounts

Stackable Flip
Filter Mount

Multiple Filter
Holder



Square &
Rectangular Filter
Holder

Motorized Filter
Wheel

Plate Holder /
Glass Slide
Holders

Diffuser Plate with
Rotator

Apertures

Precision Polarizer
Rotator with Tilt



Motorized
Polarizer Rotator

Kinematic Mount
For Rectangular
Optics

Rigid Flip Mount

Plain Mirror
Mounts

Kinematic Circular
Optic Mount

Top Adjustable
Mounts



Kinematic Diode
Laser Mount

Height Adjustable
XZ Tilt &
Rotation Laser
Mount

He-Ne laser Mount

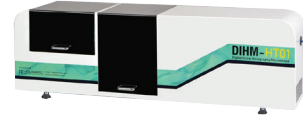
Base Mountable
XZ Tilt &
Rotation Laser
Mount

DPSS Laser Mount

He-Ne Laser
Mount Tilt And
Rotation

HOLOGRAPHY MICROSCOPE

Digital Holography

Inverted
Digital HolographyMotorized Digital
HolographyDigital Inline
Holography 1

Digital Inline Holograph

MOTORIZED MICROSCOPE

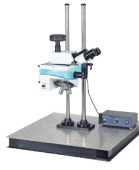
TM 01



TM 02

Fluorescence
Imaging**FLUORESCENCE MICROSCOPE**Inverted
FluorescenceConfocal Fluorescence Correlation
Spectrometer**INSPECTION MICROSCOPE**

Automated



Laser Microscope



Work Station

Laser Ablation
Inspection

Digital Inspection

Inspection with
Boom Stand**PROBE STATION MICROSCOPE**Quadrupole
Magnetic Probe

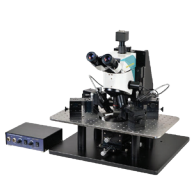
HV - IV



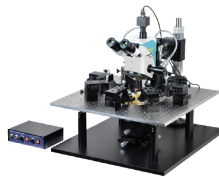
Piezoelectric

Probe Station
System T01 ECProbe Station
Trinocular T01L

Probe Station 2M



Probe Station 4M



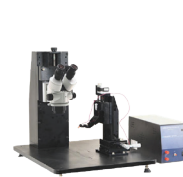
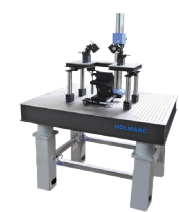
Probe Station 8M



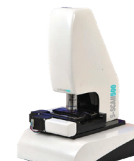
RF Probe Station



Micro manipulator

Motorized Micro
Manipulator

Probe Accessories

AUTO MICROSCOPEHorizontal
MicroscopeLong Working
DistancePrecision XY
Manual StageManual Sample
Holder

Auto microscope 1



Auto microscope 2

2D TRANSFER SYSTEM



2D Transfer System Digital Microscope

2D Transfer System with Trinocular Microscope 1 and 2



Thermal Lens Microscope

Inverted Microscope

Basic Laboratory Microscope

Automatic Laboratory Microscope

Tele microscope

Optical Measuring Instruments



Auto Measuring Microscope

Upright digital Measuring

Auto Digital Microscope

Auto Metallurgy



Metallurgy Microscope

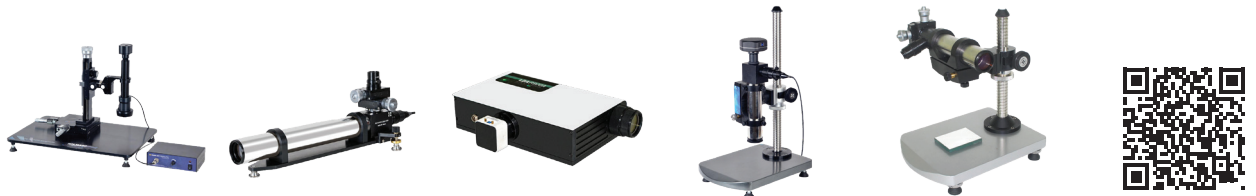
Tool Maker's Microscope

Telecentric Digital Inspection

Traveling Microscope 01

Traveling Microscope 02

Digital Traveling Microscope



Digital Traveling Microscope 5x

Autocollimator & Accessories

Digital Autocollimator

Autocollimator & Accessories

Autocollimator with Vertical Stand



External XYZ Tilt Sample Holder

Adapter for Petridish

Microscopy External Positioning System

Goniometer & Spectrometer



Goniometer



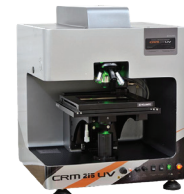
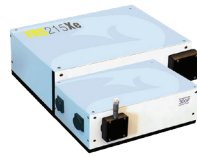
CCD Spectrometer

CCD Spectrometer
CG216CD Spectrometer
CG214Scanning
Spectrometer

Monochromator

Stitched Scanning
SpectrometerMulti Scanning
SpectrometerStandard
MonochromatorDUAL Grating
MiniScientific
MonochromatorsLaser Raman
Spectrometer

Compact Model

Research Grade
Upright RamanConfocal Laser
RamanFluorescence
SpectrometerSpectra
Accessories

Confocal Micro Raman Upright



Confocal Micro Raman Inverted



Lens Assembly

SOURCES & DETECTORS



CCD Camera



Light Sources

Fiber Optics Patch
Cords

Optical Chopper

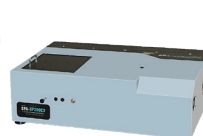
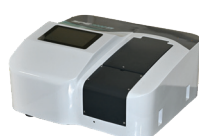


Integrating Sphere

Spectrophotometer



Spectrophotometer Single Beam and Double Beam



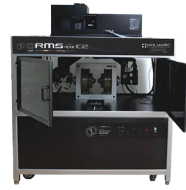
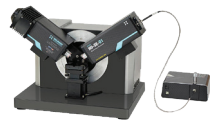
Thete 2 Theta



Diffuse Reflectance Spectrophotometer



Ellipsometer

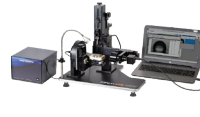
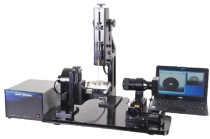
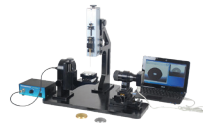


Variable Angle Laser and Spectroscopic Ellipsometer

Magneto Optic Ellipsometry

Fizeau Interferometer

Contact Angle Meters



Base Model

Contact Angle Meter with Dispenser to camera positioning unit, Motorized Substrate Holder, Automated Dispenser, Temperature Control and high speed Camera

Polarimeter



Digital Polarimeter

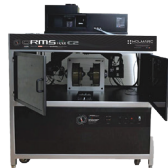
Spectroscopic Polarimeter

Automatic & Spectroscopic Digital Refractometer

Near Normal Spectroscopic

Reflectometer

Magneto Optical Kerr Effect Station



Solar Simulator

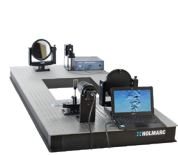


Magneto Optic Spectrometer
Spectroscopic Kerr / Faraday / Ellipsometry

Solar Simulator 1

IV Measurement System

IV Measurement with Keithley SMU



Schlieren Imaging System

Laser Scribing / Ablation

LBIC

Impedance Tube



Photodetector Characterization

Conductivity Cell

Lees Disc Apparatus

Speckle Pattern Interferometer

Triboelectric Measurement

Z Scan System

Optics



RIGHT ANGLE
PRISMS



DOVE PRISMS



PENTA PRISMS



EQUILATERAL
PRISMS



SCHMIDT PRISMS
PRISMS



RHOMBOID
PRISMS

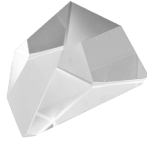
Prisms



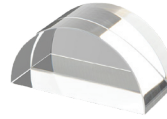
PELLIN BROCA
PRISM



WEDGE PRISMS



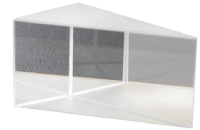
AMICI ROOF
PRISMS



SEMI CIRCULAR
PRISMS



CORNER CUBE
REFLECTORS



LITTROW PRISMS

Lenses



POSITIVE AND
NEGATIVE



CYLINDRICAL



ACHROMATIC
LENSES



PLANO CONVEX AND PLANO CONCAVE
CYLINDRICAL LENSES



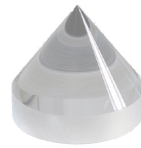
PLANO CONCAVE
LENSES



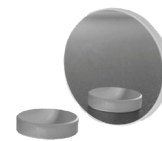
BI CONVEX
LENSE



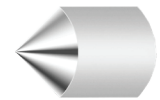
BI CONVEX
LENSE



Axicons



Plano Aluminium
Silver Mirrors



Cone Mirrors

Optical Systems



Variable Beam
Expanders



Cylindrical Beam
Expanders



Fiber Collimator /
Focusers



Eye Loupe



Variable Neutral
Density Filters

Polarizing Optics



Multiple-Order
Wave Plates



Zero - Order Wave
Plates



Fresnel Rhomb Retarders



Soleil - Babinet
Compensator



Absorptive Neutral
Density Filters

Motorized Linear and Rotation Stages



Manual XY Theta Stage



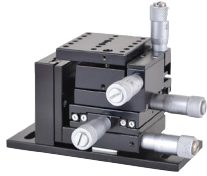
XYZ Positioner



XYZ Compact Translation Stage



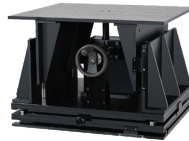
4 Axis Stages



Five Axis Positioner



XYZ Heavy Duty Translation Stages



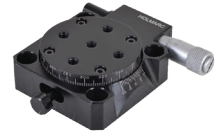
Heavy Duty Manual Stage



Cryostat Positioner



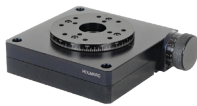
Heavy Duty Goniometer Rx Ry Rz



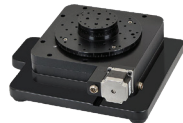
Rotation Stages



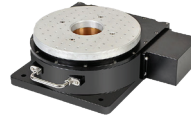
Angle display unit



WRSC series Rotation Stages



Motorized Theta 2 Theta Stage



Rotation stage with IP65 rating



Motorized Goniometer



Sine Drive Angular Stage



Motorized Actuator



Motorized Translation Stages



XY Moving Platform



Motorized Vertical Translation Stages



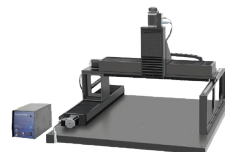
Motorized Two Axes Gimbal Stage



Control Electronics & Software



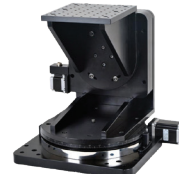
Automated XYZ Traverse System



Gantry Design Stage



Dual Axis Antenna Positioner



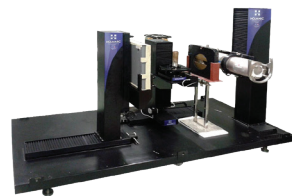
Antenna Positioner



Pitch & Yaw Positioning



Position Controlled Stage



Radiography Multi Axis Manipulator Conventional, Digital & CT



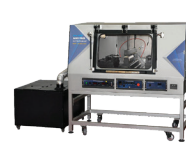
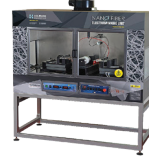
Cartesian Design Stage



Motorized Multi Axis Stage



Research LAB Products



HO-NFES-040B

Dual Pump with
Humidity Control

Yarning System

Spray Pyrolysis Equipment



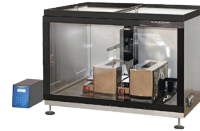
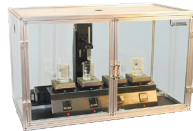
Flame Assisted SP

Nano Fiber
Spinning Yarning

SPE Larger Version

Vacuum Spray
AutomatedProgrammable
Multi Nozzle

UV Ozone Cleaner

UV Ozone leaner
150UV Ozone leaner
250UV Ozone leaner
350UV Ozone leaner
400SILAR Coating
with StirrerSILAR Coating
Stirrer SSILAR Magnetic
Stirrer 1SILAR Magnetic
Stirrer 2SILAR for Large
SubstrateMagnetic Stirrer &
Ultrasonic BathSILAR without
heater and stirrer 1

Dip Coating Unit

SILAR without
heater and stirrer 2Magnetic Stirrer
Air Tight Chamber

Dip Coater

Multiple Dip
CoaterAngle Dependent
Dip CoaterDCU Infrared
DryerDCU with Hot
ChamberLong Travel Dip
CoatingDCU with Blue
Light CuringDCU with Magnetic Stirrers &
Air Tight Chamber

Spin Coating Unit



Spin Coating Unit



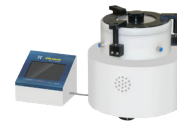
SPU with UV curing system



SPU 4 Channel Syringe Pump



SPU Glove Box Compatible



SPU Polypropylene body



SPU Larger Version

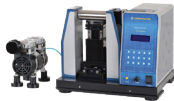
Other Equipments



Bench Top Rubbing Machine



Thermocycler



Vacuum Oven



EC Discharge Machining



UV Laser Writing System



UVLW for Photolithography



T Discharge Rate Measurement



Ion Exchanger



Syringe Pump



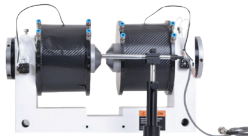
Peristaltic Pump



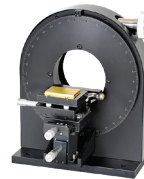
Desktop Dispensing Unit



PC based water cooled electromagnet



Hot Plate XYZ Positioner

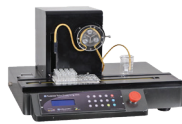


Mini Sample Heater



4 Tesla Electromagnet Lab

Laboratory Automation



Single Channel Dispensing Station



MICRO Plate 8 Channel Precision Dispensing Station



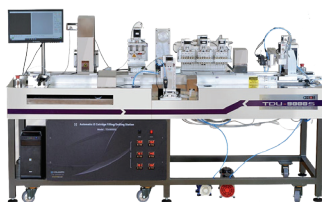
Multi-channel PDS



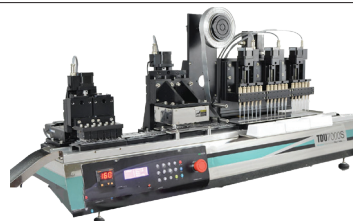
Flowline F100



Reel to Reel Printing



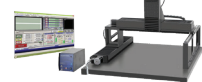
Automated i4 Cartridge Filling / Sealing station



3 x 6 channel Precision Automated Filling & Sealing station



Multi Axis Manipulator



Gantry Design Stage

Product Warranty

GENERAL TERMS AND CONDITIONS OF WARRANTY

Every Holmarc Instruments and its accessories are warranted by HOLMARC OPTOMECHATRONICS LTD for a period of ONE YEAR from the date of original purchase. Holmarc will repair or replace a product, or part thereof, found by Holmarc to be defective, provided the defective part is returned to Holmarc, with proof of purchase. This warranty applies to the original purchaser and our distributors and is non-transferable. Each returned part or product must include a written statement detailing the nature of the claimed defect, as well as the end user's name, address, and phone number. This warranty is not valid in cases where the product has been abused or mishandled, where unauthorized repairs have been attempted or performed, or where depreciation of the product is due to normal wear-and tear. Holmarc specifically disclaims special indirect, consequential damages or lost profit which may result from a breach of this warranty. Any implied warranties which cannot be disclaimed are hereby limited to a term of one year from the date of original retail purchase. Holmarc reserves the right to change product specifications or to discontinue products without notice.

OPTICAL TABLES AND BREADBOARD WARRANTY

Products are guaranteed to be free from defects in material and workmanship, for a period of 1 year. In addition to the 1 year warranty, breadboards and optical tables are warranted for 5 yrs against delamination if used according to the instructions. The sole remedy is repair or replacement of the defective product, or at Base Lab Tools option, a refund of the purchase price. Holmarc offers installation services on all systems and vibration control equipment. We provide a lifetime guarantee that all of our passively damped optical tables and breadboards will meet all originally stated performance specifications under normal use and proper handling. We provide a lifetime guarantee that all our optical table tops and breadboards (both passive and actively damped) will be free from defects in workmanship, including delamination of the top and bottom skins, under normal use and proper handling. In addition, all control electronics and active damping modules for our actively damped tables carry a 1 year warranty from date of shipment.

OPTICAL COMPONENTS & SYSTEMS

Gratings, optical filters and mirrors (whether sold separately or as a component of other products) are warranted for a period of 90 days from the date of shipment. Lasers and components thereof are warranted for the number of hours (or other measure of usage) specified in the operating manual for each laser or component thereof, or for 1 year from the date of shipment, whichever is shorter (Flash lamp components of lasers, and the optical and crystal components of pulsed lasers, which are warranted for 90 days). All other products are warranted for 1 year from the date of shipment.

NON-WARRANTY REPAIRS

If a product that is not covered by the above warranty needs repairing, we will first provide an estimate of repair charges and then repair the product upon receiving authorization from you. Repairs are warranted for 90 days. For any questions on the above, please don't hesitate to contact us for additional information.

Quality Policy

We at HOLMARC are committed to continually improve quality of our products and services to meet and exceed customer satisfaction at all times. To achieve this we are committed to:

- ▶ Identify and conform to the needs and expectations of our customers and to improve customer satisfaction.
- ▶ Monitor and review our service provision and processes, identifying potential errors and implementing the necessary actions to eliminate them.
- ▶ Provide extensive training to build a team of competent staff, promoting a 'Do It Right The First Time' attitude towards quality.
- ▶ Comply with all applicable requirements including customer requirements.
- ▶ Maintain our reputation for honesty and integrity and ensure that this is reflected throughout the organisation.

For Warranty and Services, Product complaints please Contact our engineers +91 920-719-7772 , +91 920-719-7776
B.7., H.M.T. Industrial Estate H.M.T. P.O, Kalamassery, Kochi Kerala, India - 683 503 ISO 9001:2015 | Made in India

Research Solutions

At HOLMARC, we take pride in being your trusted partner for setting up state-of-the-art physics labs. As manufacturers and educators ourselves, we understand the importance of quality instruments in shaping young minds.



Why Choose Us?

- ▶ **Quality First:** We adhere to rigorous standards, ensuring that every instrument meets excellence.
- ▶ **Educator-Centric:** Our designs prioritize ease of use, empowering educators to focus on teaching.
- ▶ **Affordability:** We believe quality education should be accessible to all.
- ▶ **Custom Solutions:** Tailored packages to suit your lab's unique requirements.
- ▶ **Optical Breadboards:** Explore our versatile breadboards for precision experiments.

Contact Us

Ready to elevate your lab? Reach out to us today!

Website: www.holmarc.com

Feel free to customize this content further, add high-quality images, and emphasize the unique features of your products. If you need any specific details or additional sections, just let me know!

Our address

B.7., HMT Industrial Estate, H.M.T.P.O, Kalamassery 683503, Kerala, India

Corporate Office
Door No. 37/386, Manath Tower
Opp. Kalamassery Police Station
Changampuzha Nagar P.O, Kochi
Kerala, India, Pin - 682033

Registered Office
B.7., H.M.T. Industrial Estate
H.M.T. PO, Kalamassery, Kochi
Kerala, India, Pin - 683 503

Visit Us @
Email : sales@holmarc.com
Website : www.holmarc.com

+91 920-719-7771

+91 920-719-7772

+91 920-719-7776

CIN : U33125KL1993PLC006984
GST No: 32AAACH9492C1ZQ
MSME : UDYAM-KL-02-0043524

ISO 9001:2015 Certified

Get in touch with our technical experts and discuss your application needs and unique requirements. You can be sure that you will receive rapid response and service.



Holmarc Opto-Mechatronics Ltd has been organized as a provider of engineering tools for scientific research. Our company is equipped to meet most challenging and demanding requirements of scientific community with our manufacturing and development capabilities in optics, mechanics, electronics and software. At Holmarc, experienced engineers, designers and technicians work hand in hand to deliver state of the art engineering solutions to our clients.

